

Limb Preservation IN CANADA

A SUPPLEMENTAL PUBLICATION OF WOUND CARE CANADA

**New Perspectives in
Diabetic Limb
Preservation**

**Session Summaries
from Wounds Canada's
Spring 2019 Symposium**

**A Pathway for
Preventing and Managing
Diabetic Foot Complications**

**Resources for
Health-care Professionals**

**Building a Community of
Practice**



**“THE MOST COMFORTABLE
WALKING SHOES
I HAVE EVER TRIED.”**



THE 928v3

EVERYDAY COMFORT

Make this popular pick your go-to walking shoe.

GUIDED STABILITY

Walking Strike Path &
ROLLBAR help guide
your gait

PREMIUM COMFORT

ABZORB foam adds
cushioning and
helps lessen impact

THOUGHTFUL DESIGN

Internal seamless
Phantom Liner helps
reduce irritation

The New Balance Walking 928v3 is a hallmark style in the NB footwear line-up servicing a wide range of foot health conditions including the characteristics ideal for clients managing diabetic foot ulcers. Offered in five widths in men's B to 6E and five widths for women's 2A to 4E, including a deep/wide fitting toe box and instep, a seamless and breathable internal mesh liner, Rollbar rear-foot support for both pronation and supination, lace and Velcro options, and a stiff rocker sole to help when Walking, the 928 style helps those with particular focus on treatment in the reduction of amputations. New Balance Canada is proud to provide diverse, multiple-width footwear for special foot-health needs.

Contents

From the Editor	5
New Perspectives in Diabetic Limb Preservation: Addressing a Serious Problem Together	6
Building a Community of Practice	11
Spring 2019 Symposium: New Perspectives in Diabetic Limb Preservation—Session Summaries	16
Resources	51
Wounds Canada Develops Infographic to Increase Awareness of Diabetic Foot Complications	55

Limb Preservation in Canada

2019 · Volume 1, Number 1

ISSN 2562-8712

Editor Sue Rosenthal, BA MA

Editorial Assistant Katie Bassett, BMus

Art Director Robert Ketchen, BASc ACIDO

wccproduction@woundscanada.ca

Contributors

Guilliana Quinto

Armine Shohdy

Editorial Advisory Board

Mariam Botros, DCh DE IIWCC MEd(IP)

James Hill, DPM FACFASA

Ahmed Kayssi, MD MSc MPH FRCSC

Advertising Sales

416-485-2292 · info@woundscanada.ca

Limb Preservation in Canada is published by Wounds Canada (Canadian Association of Wound Care) and is a supplement to *Wound Care Canada*.

All editorial material published in *Limb Preservation in Canada* represents the opinions of the writers and not necessarily those of Wounds Canada.

Discussions, views and recommendations as to medical procedures, choice of treatments, dosage or other medically specific matters are the responsibility of the writers. No responsibility is assumed by the publisher or publishing partners for any information, advice, errors or omissions contained herein.

The inclusion of advertising and sponsored material in *Limb Preservation in Canada* does not constitute a guarantee or endorsement of any kind by Wounds Canada.

All rights reserved. Contents may not be reproduced without written permission of the Canadian Association of Wound Care. © 2019.

Wounds Canada (www.woundscanada.ca) is a non-profit organization dedicated to the advancement of wound prevention and care in Canada.

Wounds Canada was formed in 1995 as the Canadian Association of Wound Care.

Wounds Canada Board of Directors

President Morty Eisenberg, MD MScCH CCFP FCFP

Past President Greg Archibald, MD CCFP FCFP

Sébastien Hains, DPM

Jolene Heil, RN BScN NS-WOC

John Hwang, MD MSc FRCSC

Janet Kuhnke, RN BA BScN MS NS-WOC

Ellen Mackay, MSc RD CDE

Barbie Murray, BScN RN MCS WH

Petra O'Connell, BSc MHSA

Deirdre O'Sullivan-Drombolis, BScPT MCISC

Andrew Springer, DCh

Chairman Emeritus R. Gary Sibbald, BSc MD FRCPC (Med Derm) MACP

CEO Mariam Botros, DCh DE IIWCC

Presented in
conjunction with

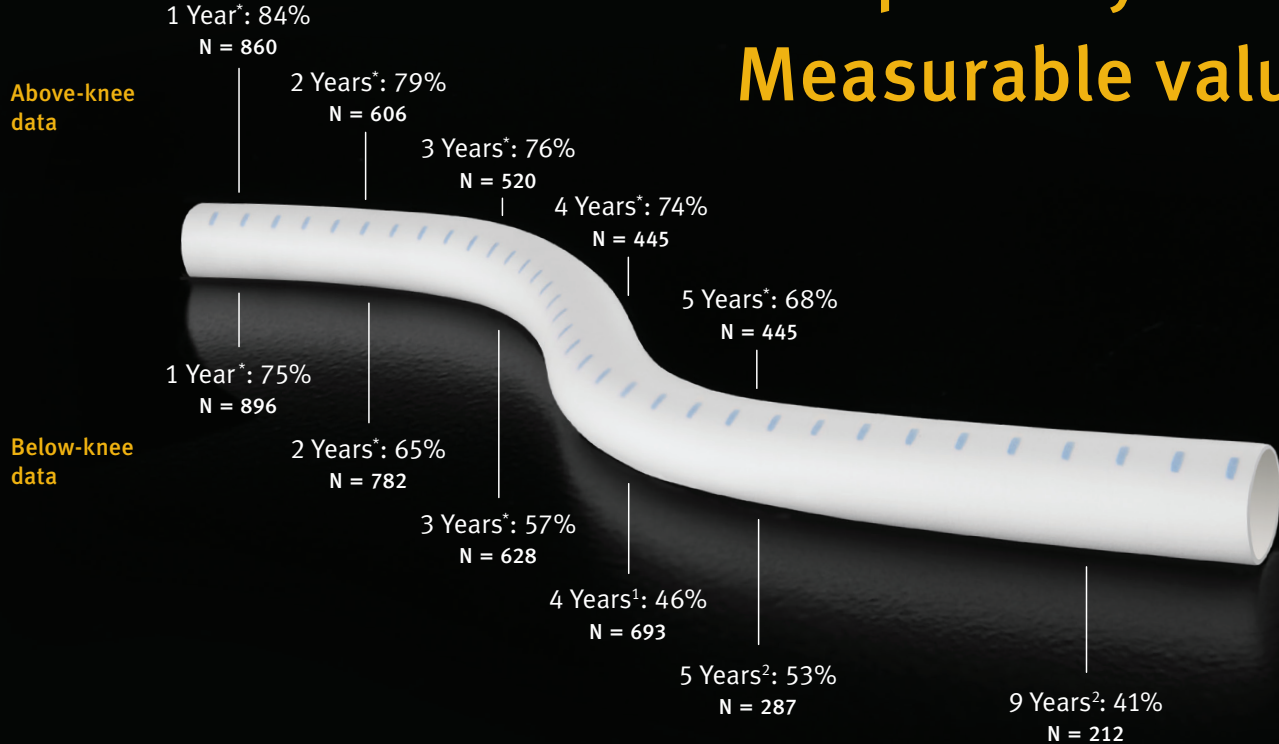


Get on the List

Each time a new issue of *Limb Preservation in Canada* becomes available, subscribers will be notified by an email that contains a live link to the online magazine. If you are not already a subscriber, get on the list by sending an email to info@woundscanada.ca. **It's free!**

Proven patency.

Measurable value.



Overall weighted average primary patency

GORE® PROPATEN® Vascular Graft



OVER
500,000
devices implanted



OVER
2,000
limbs studied



OVER
30
clinical publications

LASTING
THROMBORESISTANCE
PROVEN
TECHNOLOGY

CBAS HEPARIN SURFACE**

Walk through the data –Explore the interactive data summary at
propatenperformance.com

* Overall weighted average primary patency is based on data from 12 peer-reviewed publications meeting pre-determined inclusion criteria. Visit propatenperformance.com to see inclusion criteria, explore the data, see publications, and request reprints.

** CBAS Heparin Surface. W. L. Gore & Associates Web site. <https://www.goremedical.com/cbas/references>. Accessed July 30, 2018.

1. Dorigo W, Raffaele P, Piffaretti G. Results from an Italian multicentric registry comparing heparin-bonded ePTFE graft and autologous saphenous vein in below-knee femoro-popliteal bypasses. *Journal of Cardiovascular Surgery* 2012;53(2):187-193.
2. Monaca V, Battaglia G, Turiano SA, Tringale R, Catalfamo S. Sub popliteal revascularization. Criteria analysis for use of E-PT.F.E. (Propaten®) as first choice conduit. *Italian Journal of Vascular & Endovascular Surgery*. 2013;20(3):165-169.

W. L. Gore & Associates, Inc. • Flagstaff, AZ 86004 • goremedical.com

Products listed may not be available in all markets.

CBAS is a trademark of Carmeda AB, a wholly owned subsidiary of W. L. Gore & Associates, Inc.

GORE®, PROPATEN®, and designs are trademarks of W. L. Gore & Associates.

© 2018 W. L. Gore & Associates, Inc. AX1267-EN1 DECEMBER 2018



From the Editor

Welcome to the first issue of *Limb Preservation in Canada*, a new publication from Wounds Canada. This publication began as a supplement to *Wound Care Canada* to provide a summary of the sessions offered in the New Perspectives in Diabetic Limb Preservation symposium held in Toronto in May 2019. But, as we put together the summaries of the event, plus the summit held the evening before the event, we knew a single supplement wouldn't satisfy the overall knowledge needs of Canadian researchers, clinicians and policy makers working in this area—and especially the needs of those not yet involved with this very serious and complex topic. As a result, we decided to create an annual, standalone publication—*Limb Preservation in Canada*—and turn it into a peer-reviewed journal aimed at advancing knowledge and its application to practice, research and policy making for this growing community.

This inaugural issue is, however, as we first envisioned it, containing highlights of the summit (page 11), summaries of the sessions presented in the New Perspectives in Diabetic Limb Preservation symposium (page 16), plus two bonuses: a list of resources readers can access to assist them in their clinician/policy/research decision making (page 51) and an article on the development of an infographic that can be used to increase awareness and provide education about preventing and managing diabetic foot complications (page 55).



Subsequent issues of *Limb Preservation in Canada* will feature an expanded range of article types to improve the understanding among stakeholders working in the area of limb preservation, provide insights into how to apply new knowledge, and strengthen the community's bonds.

A number of individuals have been involved in getting us to this point. Ahmed Kayssi first proposed the idea of Wounds Canada hosting a limb preservation meeting. From there, the Wounds Canada team, under the guidance of CEO Mariam Botros, moved the plan from idea to final products: the symposium and the pre-symposium summit of experts. James Hill, president of the Canadian Podiatric Medical Association, brought in the support of his organization as a partner in the symposium. Both Ahmed and James were key contributors throughout the planning and execution processes. Our industry partners provided their expertise at the booths during the symposium. Symposium delegates cemented connections with colleagues through networking and brought their passion and curiosity to enliven the discussions during the events.

The symposium and associated activities demonstrated that the Canadian limb-preservation community is already thriving. Through *Limb Preservation in Canada* we hope to support and enrich this community over the coming years.

Sue Rosenthal

Editor

New Perspectives in Diabetic Limb Preservation:

Addressing a Serious Problem Together

The Problem

According to Diabetes Canada data, 11 million people live with diabetes and pre-diabetes in Canada.¹ Individuals with diabetes are 15 to 40 times more likely to require lower-leg amputation than those in the general population.

Approximately 85% of amputations are preceded by the development of a neuropathic foot ulcer,² and the lifetime risk of ulcer development is 15 to 25%.³ The annual cost to Canadian health-care systems of treatment for diabetic foot ulcers is \$547 million (based on 2011 Canadian dollars). The average cost per case is \$21,371.⁴

Following a lower-limb amputation, people with diabetes not only suffer the clinical and psychological consequences of limb loss, but also have a five-year mortality rate of 50%.⁵ This mortality rate is higher than that seen in breast cancer in females, prostate cancer in males, or lymphoma. In addition, amputations often take people out of the workforce and create significant negative lifestyle changes, not only for the patients but for their families.

The cost of amputation alone, not including rehab costs, prostheses and loss of income, is \$75,081.⁶

The effects of a diabetes-related amputation are devastating, yet most of these amputations are preventable.

Catching Up to Other Countries: Save a Limb, Save a Life

Though Canada has managed to reduce the number of myocardial infarctions and strokes in the diabetic population, amputation continues to be on the rise—despite major advances in the medical field—and compares poorly with many other developed countries. Amputation remains one of the most feared complications in the lives of people with diabetes. Diabetes-related foot ulcers are one of the leading causes of hospitalization and amputation and are among the highest costs in our health-care system.

Unfortunately, care delivered is inconsistent. According to Kayssi et al., “There is variability in the delivery of lower-extremity amputations and postoperative hospital discharges among surgical specialists and regions across Canada.”⁷

Canadians deserve diabetes-related foot care that aligns with international standards.

To address these problems, Wounds Canada created the New Perspectives in Diabetic Limb Preservation symposium, a day-long event to raise awareness about the issue and promote cost-effective strategies to reduce the prevalence of diabetes-related amputations.

A joint venture between the leading national wound care organization, Wounds Canada, and the Canadian Podiatric Medical Association, the symposium was endorsed by the Division of Vascular Surgery at the University of Toronto and the Canadian Society for Vascular Surgery.

Attendees included all types of primary care professionals and specialists such as surgeons, family physicians, pharmacists, nurse practitioners, chiropodists, surgical podiatrists and nurses. Health-care policy makers also attended.

The event brought together national and international experts and clinicians with expertise and interest in managing the diabetic foot to discuss tried-and-true strategies as well as the latest innovations in the field. Their presentations, which



shared knowledge and implementation strategies, were designed to offer health-care providers and decision-makers the tools needed to prevent amputations, optimize healing outcomes, and help patients with diabetes who may, now or in future, be struggling with the challenges of foot health.

Beyond the Symposium

The broader strategy, of which this symposium was a part, involves multiple organizations working together on research, practice strategies and raising awareness. Examples of recent initiatives include:

- A national diabetic foot task force, comprising representatives from numerous provincial and national organizations, has been working to create national standards and pathways. Their work will be publicized and disseminated so all Canadians—including patients, health-

care practitioners and policy makers—become aware of the minimum levels of care they should expect from their health-care systems.

- A research community of practice has recently been formed (see page 11). The work undertaken by this group will underpin the ongoing development of practice standards and a patient bills of rights related to diabetic foot management.
- Alliances of multiple organizations at the regional, provincial and national levels, and incorporating different stakeholder groups, will continue to work toward advancing change in this area so that care meets internationally recognized standards, and the public is aware of the standards.

Multi-group alliances will continue to raise awareness about evidence-based strategies and promote cost-effective methods to reduce the prevalence of diabetes-related amputations.





Become a member of Wounds Canada

As the leading wound care organization in Canada we provide you, our members, with the information and tools to help advance your career, your practice and your team. Your membership provides you with:

- Exclusive access to the members-only section (coming soon) of the website
- Quarterly newsletters
- Discounts on our **professional education programs**; for example, save \$40 on this year's fall conference registration fee
- Access to our organizational updates that outline how your membership supports our mission
- The opportunity to become involved as a regional representative and/or board member
- Networking opportunities with other regional, national and international health professionals
- Discounts on wound care tools and resources sold in our **eBoutique**

Find out more about us at www.woundscanada.ca.



How are **you** managing infection...



Contact your local Acility™ Account Executive or call **800-668-5403** to learn more about wound cleansing with **V.A.C. VERAFLU™** Therapy* and **PROMOGRAN PRISMA™** Wound Balancing Matrix



* V.A.C. VERAFLU™ Therapy is not indicated for treatment of infection. It can be used in the management of infected wounds along with the appropriate clinical protocol such as debridement and antibiotic treatment.

NOTE: Specific indications, contraindications, warnings, precautions and safety information exist for KCI and Systagenix products and therapies. Please consult a clinician and product instructions for use prior to application.

©2017 KCI Licensing, Inc. and Systagenix Wound Management, Limited. All rights reserved. All trademarks designated herein, unless otherwise noted, are proprietary to KCI Licensing, Inc. and Systagenix Wound Management, Limited., its affiliates and/or licensors. PRA001112-RO-CA, EN (03/18)



Building a Community of Practice

On May 30, the evening before Wounds Canada's spring 2019 symposium, *New Perspectives in Diabetic Limb Preservation*, the event chair, Ahmed Kayssi, with logistical support from Wounds Canada, convened a meeting of experts and researchers to share current practices to advance the care of people at risk for non-traumatic lower-leg amputations secondary to diabetes.

The goal of the meeting, which was supported by an unrestricted educational grant from Cook Medical, was to grow a virtual community of practice specific to diabetic limb preservation.

Though various groups have undertaken such discussions in the past, this is the first time a significant number of interested individuals—40 from across Canada—had been brought together to focus on challenges and opportunities surrounding diabetic limb preservation.

To set the stage, the first portion of the event involved presentations on the status of amputation prevention in various jurisdictions, including barriers and facilitators. Though not all geographic areas were discussed, the speakers represented a cross-section of Canada.

Newfoundland and Labrador (Zaina Albalawi)

Newfoundland and Labrador have the highest rates of diabetes and amputations in the country. Challenges include the region having Canada's highest level of rural living, lifestyle factors, eco-

nomic issues, an aging population and a drop in an already small population. Restricted resources are another significant challenge.

On the positive side, the province has a number of champions for limb preservation. As well, Atlantic Canada has identified diabetic foot disease as a priority and has allocated funding focused on vascular disease.

Interested parties are currently navigating partnerships with stakeholders, including collaborators such as Canadian Institute for Health Information (CIHI), various local groups, and the Canadian Agency for Drugs and Technologies in Health (CADTH), which is a big player in contributing evidence for decision-makers and piloting the implementation of new standards.

One of the opportunities is to build on the work already being done, with more focus on the unique risk factors in the province.

Nova Scotia (Matt Smith)

Nova Scotia has undergone systemic changes, where nine health districts became four zones. Halifax has a cardiac-level vascular clinic, but other regions don't have anything at this level. Wait times can be long. Patients may have to travel long distances to access care.

Opportunities include establishing hub-and-spokes care, with connections from a hub to outreach posts, as well as virtual health initiatives.

Quebec (Maryse Beaumier)

A unique characteristic of Quebec is that data from the province are often not included in published national data. Other challenges are common to all regions. For example:

- Few wound clinics exist in the province, and the two that do are in major cities (Québec and Montreal).
- There is a lack of education in wound care for physicians. Nurses are given practice in the area of wound care but can be blocked by other decision-makers.
- Technology for vascular assessment is not used:
 - ABPIs (ankle-brachial pressure indexes) are not often done or not done well; there is a need to upgrade practitioners' knowledge.
 - Toe pressures are not often obtained.
 - Only two sites in the province have the technology to conduct transcutaneous oxygen measurement.

Opportunities abound for education, and some new programs are on the horizon. A three-credit course at the university level is now mandatory for nurses. A possible master's degree for physicians and nurses is in the works.

On the research front, to date, only one study has been conducted on the status of amputations in Quebec. There is clearly an opportunity for more research in this area.

Ontario (Ahmed Kayssi)

In Ontario, until recently, limb preservation has not been prominent in the health-care model, whereas in some other provinces, the issue has been on the health-care agenda for some time. A number of centres of excellence exist in the province, but co-ordination has been lacking. Experience indicates that referring someone for an amputation is easier than co-ordinating efforts to heal a wound.

Other challenges include:

- Lack of access to foot and ankle surgery: Providers are overwhelmed; the problem is lack of resources, not of interest.
- Lack of education: Wound care in Ontario lags behind other areas of health care, but why?

- Health care in the North: The people there are at much higher risk than those in southern regions; we need a frank discussion on how our Northern populations are being treated.

Manitoba (April Boyd)

In Manitoba, the rate of diabetes in the population is 1 in 1,000. In the Indigenous population, the numbers are significantly higher: 15 in 1,000 for women, and 20 per 1,000 for men. Manitoba has the highest rate of Indigenous persons per population in Canada. This group is two to three times more likely to undergo an amputation, due to several factors: they often live outside the city, have poor access to running water, have a diet high in carbohydrates and junk food, and are often late to get care.



The bulk of care occurs in two hospitals in Winnipeg, which, for many patients, means long-distance travel. Guidelines for primary care are in place but are difficult to implement if patients can't get to care.

Many community physicians lack the knowledge to manage these patients, creating both a challenge and an opportunity. A new program allows medical students to move through practice stations and gain knowledge while learning about different specialties.

Saskatchewan (David Kopriva)

The common challenges from the other provinces also apply to Saskatchewan. However, with only one million people, the province can try things out on a small scale and is, therefore, nimbler than the larger provinces.

Saskatchewan was an early creator of a lower-extremity pathway. Unfortunately, early does not equal good; the pathway is not working adequately, because the foundations were not well set. The province has a high percentage of Indigenous persons, many of whom already have advanced conditions. We are not case finding, so they are coming to us late or too late. The pathway doesn't address this and needs to be adjusted.

A committee on the appropriateness of care in the province is looking at how to improve the pathway.

The vascular community has been important in developing the pathway but is frustrated because it's the default service for managing foot wounds. Practitioners see a lack of collaboration and support among health-care providers.

Data, while key, are difficult to access. Requests for data go into a queue and can take time to obtain. Ultimately the data drive the improvements.

Alberta (Karim Manji)

Patients with diabetic foot complications will have different needs at different times, such as simple wound care in the community or access to a complex wound care team in an interdisciplinary setting.

Alberta has only one tertiary care centre, in Calgary. Patients are often sent to high-risk foot

teams, who can't manage the volume of patients. Edmonton too needs a tertiary centre.

Podiatry has not been integrated into the full hospital service, which makes building bridges with other specialties difficult.

We need to work together to create interdisciplinary co-operation. This national conversation from leaders across the country in limb preservation is an important step.

Summary (Ahmed Kayssi)

The presentations indicated that provinces share many common challenges, including access to resources, degrees of collaboration, levels of education, system weaknesses and necessary policy changes. We were talking about these issues 15 years ago, but at that time there were only three people rather than 40.

General Discussion

Comments and recommendations from the participants included the following:

System issues:

- Health-care systems don't necessarily need more money but rather need money to be allocated to disease management and prevention, as 77% of total costs of managing patients with diabetic foot complications are for inpatient hospitalization (often due to infection) and amputation.
- We need to change how we deliver care. The implementation of simple pathways has shown differences in lengths of stay, implementing order sets, offloading and basic dressing, all of which lead to significant changes in outcomes.
- Physicians should be the ones to move wound care forward; it is currently nurse-driven.
- Most care for limb preservation can be managed non-surgically. However, sometimes quick action from vascular surgeons is necessary.
- In Ontario only 20% or less of patients who need pressure redistribution get it, there is not enough debridement, and triage into urgent and emergent care is handled poorly.
- Personalized care is best but isn't always possible.

- Clinicians complete documentation for most procedures, but some recording, particularly of wound care data, is entered by non-clinicians.
- Clinicians need to do more case finding, rather than waiting for patients to find them.

Education issues:

- The provinces and territories need physicians who are capable of working in ambulatory wound clinics.
- For every 1% reduction of A1c, there's better healing; but in Ontario, only 19% of patients and home-care nurses know the patient's A1c.
- Nurses are not qualified to diagnose, so physicians need to be better trained.
- Education is a top priority.

Collaboration issues:

- Manitoba is split between provincial and federal administration and funding.
- Podiatry is severely limited in Ontario, which has a different funding model than other provinces.
- Orthopedic specialists in general don't want a practice that has a lot of complex patients.

- Most family physicians aren't fully versed on care pathways, including where to refer patients.
- Foot and ankle surgeons value podiatry, but orthopedic surgeons in general need to be convinced. In Alberta, podiatrists, and foot and ankle orthopedic surgeons work well together. Patients are sent to one or the other depending on their condition.

Research issues:

- New research needs to be conducted to develop improved outcomes.
- The health-care community requires data on the status of amputation across the country.
- We can identify patients with amputations because they are treated in the hospital, but most patient needs are addressed in the community.
- The gap in Quebec regarding the use of data from other provinces or the United States is significant.
- Topics for future research:
 - tracking the change of cost when patients are treated via interdisciplinary care



- developing a research agenda for people who have lost a limb
- Research can't sustain anything, but it can bring people together to discuss education and what types of data are needed.
- Data should be published to improve awareness among health-care providers.
- There is a need to develop and sustain collaboration between individuals/organizations that have data with those who can analyze and disseminate it.
- More geographic analysis is needed. Amputation is usually caused by many factors working together. Certain markers are indicative of important social factors.

Advocacy issues:

- To move the issue forward with governments it is important to show cost savings.
- The patient voice must be included. Patients sit on decision-making boards and can sway decisions.
- Ways must be found to mobilize knowledge, via publishing and other methods.
- Outreach in practice can be a part of advocacy.

Attendees at the Dinner Meeting

Peggy Ahearn	Karim Manji
Afsaneh Alavi	Tilla Manning-Atwell
Zaina Albalawi	Tobi Mark
Reza Basiri	Perry Mayer
Maryse Beaumier	Crystal McCallum
Mariam Botros	Ann-Marie McLaren
April Boyd	Samantha Minc
Charles de Mestral	Bijan Najafi
Lisa Dubrofsky	Richard Neville
Robyn Evans	Addie North
Breanne Everett	Guiseppe Papia
Randolph Guzman	Maureen Rego
Jackie Hickey	Lee Rogers
James Hill	Sue Rosenthal
Sander Hitzig	Gary Sibbald
Ahmed Kayssi	Jeffrey Siracuse
Robert Ketchen	Matthew Smith
David Kopriva	Ranjani Somayaji
Warren Latham	Amanda Thambirajah
Suzanne Lu	Olena Veryha

References

1. Canadian Diabetes Association. Diabetes Statistics in Canada. 2006.
2. Palumbo PJ, Melton LJ III. Peripheral vascular disease and diabetes. In: Diabetes in America: Diabetes Data. Government Printing Office, Washington. 1985. Retrieved from: https://archive.org/stream/diabetesinameric00nati/diabetesinameric00nati_djvu.txt.
3. Singh N, Armstrong DG, Lipsky BA. Preventing foot ulcers in patients with diabetes. JAMA. 2005;293(2):217–228.
4. Hopkins RB, Burke N, Harlock J, Jgathisawaran J, Goeree R. Economic burden of illness associated with diabetic foot ulcers in Canada. BMC Health Serv Res. 2015;15:13.
5. Armstrong DG, Holtz-Neiderer K, Wendel C, Mohler MJ, Kimbriel HR, Lavery LA. Skin temperature monitoring reduces the risk for diabetic foot ulceration in high-risk patients. Am J Med. 2007;120(12):1042–1046.
6. Health Quality Ontario. Fibreglass total contact casting, removable cast walkers, and irremovable cast walkers to treat diabetic neuropathic foot ulcers: A health technology assessment. Ont Health Technol Assess Ser. 2017;17(12):1–124. Retrieved from: www.hqontario.ca/Portals/0/Documents/evidence/reports/hta-fibreglass-1709-en.pdf.
7. Kayssi A, de Mestral C, Forbes TL, Roche-Nagle G. A Canadian population-based description of the indications for lower-extremity amputations and outcomes. Can J Surg (Journal Canadien de chirurgie). 2016;59(2): 99–106.



Spring 2019 Symposium: New Perspectives in Diabetic Limb Preservation Session Summaries

Opening

Mariam Botros, Wounds Canada's chief executive officer, set the tone of the May 31, 2019, symposium by expressing that nothing is more disheartening than seeing a patient lose a limb due to a poorly managed wound.



Mariam Botros,
DCh DE IIWCC MED(IP)

Robin Martins, staff assistant of Christine Elliott, minister of Health and Long-term Care for the Government of Ontario, recognized the efforts of individuals in the room in education, research, advocacy and awareness in wound care and noted the difference these efforts are making. She said this symposium is another example of the leadership in this area; diabetes is a prevalent problem in Canada, and sharing information and best practice ensures patients receive the best possible care. She thanked attendees for their willingness to learn and share with colleagues, emphasizing that the symposium is part of a conversation that can improve health care for Canadians.

Green Party of Ontario deputy leader Abhjeet Manay thanked attendees for the invitation to be among those who “care, nurture and heal.” Manay noted that the health-care system places too great an emphasis on treatments and cures rather than

on prevention. He went on to express frustration that politics can impede early interventions and cost millions of dollars.

Morty Eisenberg, president of the board of directors of Wounds Canada, welcomed attendees to this first event in the new symposium series. He provided an overview of the day, which would feature a panel of experts discussing important topics in the care of patients with diabetic foot ulcers, with a special focus on preventing amputation. He thanked the Canadian Podiatric Medical Association (CPMA) for its collaboration in this event.

Ahmed Kayssi, from the Department of Vascular Surgery at Sunnybrook Health Sciences Centre and the symposium's chair, and James Hill, president of the CPMA, welcomed attendees and thanked the partnering and endorsing associations.

Get More!

The written session summaries highlight the key points presented by each speaker. For a deeper dive into the information, please view the full session videos. Just click on any video window to launch.



About Symposium Attendees

NUMBER: 111

TYPE: Physicians—including surgeons and family practitioners—nurses, chiroprodists, podiatrists, health administrators, educators, researchers

SETTINGS OF PRACTICE: Acute care, family and specialty clinics, private practice, research institutions, universities and community colleges

LENGTH OF TIME IN PRACTICE: 28% had less than 10 years of practice experience, 28% had 10–20 years, 28% had 20–30 years, 16% had over 30 years



Keynote Address: Multidisciplinary Approach to Limb Preservation: Past, Present, Future

Richard F. Neville, MD FACS DMSVS

Session Summary

Throughout global health systems, there is a constant need for multidisciplinary limb teams. Looking into the future, health-care professionals must have a better understanding of successful approaches to limb preservation. After this session, participants were expected to be able to understand the structure of a successful limb preservation team, explain the options for revascularization in a limb preservation program and outline research and educational opportunities associated with limb preservation teams.

There is a worldwide need for limb preservation; over seven million chronic wounds are treated annually, costing about \$20 million. In addition to the physical and psychological effects of amputation, few disease processes have a higher mortality rate, which reaches 30% to 50% after two years.

**Richard F. Neville, MD FACS
DMSVS**

Richard F. Neville is associate director of the INOVA Heart and Vascular Institute, and vice-chairman in the Department of Surgery. Dr. Neville's prior positions include professor of surgery, Ludwig chief of the Division of Vascular Surgery at George Washington University and chief of Vascular Surgery at Georgetown University. He completed medical school at the University of Maryland and a general surgery residency at Georgetown University before moving on to a fellowship at the National Institutes of Health in endovascular device development. He then completed a vascular surgery fellowship under the direction of Dr. Robert Hobson. Dr. Neville is a distinguished fellow of the Society for Vascular Surgery, a fellow of the American College of Surgeons and a member of many other societies including the Southern Association for Vascular Surgery. He is a national and international lecturer, having published more than 100 manuscripts, 200 abstracts and 150 invited lectures, while remaining actively involved in research and the education of students, residents, fellows and other physicians. He has consistently been named to the Best Doctors in America and Washingtonian Top Docs lists. His clinical interests include lower extremity revascularization, wound healing, amputation prevention, carotid artery treatment for stroke prevention, as well as hemodialysis access.



Diabetic foot ulceration is a complex process caused by many co-existing factors, including trauma, neuropathy, infection and arterial insufficiency (see Figure 1). The goals of a limb preservation clinic are equally complex and might include

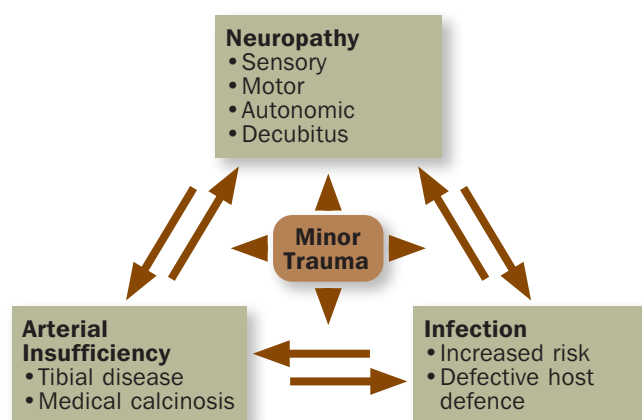


- Marketing
- Financial analysis

The success of such limb preservation clinics has been seen in other countries, including the United States (82% reduction in amputation), Sweden (78% reduction), the United Kingdom (62% reduction) and Italy (from 10 to 6 amputations per 100,000 patients). We are on the cusp of truly making a difference through multidisciplinary teams to reduce both amputation and mortality.

increasing awareness of the program and the success rate of limb preservation, streamlining care, acting as a referral source for the community, providing patient and caregiver education, and acting as a forum for research and education.

Figure 1: Cofactors in Diabetic Foot Ulcer Development



To meet these objectives, limb preservation clinics include the following:

- A team: vascular surgeons, cardiologists, radiologists, podiatrists, plastic surgeons, infectious disease specialists, nephrologists, endocrinologists, nurse practitioners, wound care nurses, case managers and administrators.
- A physical space, including a central core and an outpatient space
- Diagnostic imaging capabilities
- An operating room
- Vascular therapy
- Soft tissue therapy
- Patient education and support resources
- Research

“All politics is local; every situation is a little different. Find people who are truly interested in this topic, and just get started.”

—Richard F. Neville



The Impact of Diabetic Foot Complications: National and Global Trends

Session Summary

This session discussed the prevalence and incidence of diabetes, diabetic foot ulceration, amputations related to diabetes, and mortality post-amputation related to diabetes provincially/territorially, nationally and internationally. Speakers described the impact of diabetes and diabetic foot complications on people living with the disease and the financial impact of these complications on health-care systems. The session explored government funding approaches to diabetic foot complication prevention and management. Finally, it explored limitations to statistical data collection and reporting.

National Trends

Charles de Mestral, MD PhD FRCSC

While the number of Canadian publications on this topic has steadily increased over the past 20 years, more data are needed on diabetic foot complications. Despite the best clinical efforts, there's an overall increase in amputation numbers due to the increasing population of persons with diabetes.

Unlike cancer care centres and traumatic injury clinics, which have integrated models of care, there are few integrated amputation-prevention facilities. Limb-preservation centres exist mainly in urban

Charles de Mestral, MD PhD
FRCSC

Dr. Charles de Mestral is a vascular surgeon at St. Michael's Hospital and assistant professor of surgery at the University of Toronto. As an adjunct scientist at the Institute for Clinical Evaluative Sciences, he is pursuing research on the disease burden, the effectiveness of care and the costs of care related to foot complications and amputation prevention in patients with diabetes and peripheral arterial disease.



areas, where amputation rates are already lowest. Individuals in lower-income communities need access to this specialized care, but often don't have it. Funding is also an issue: diabetic foot ulcers (DFUs) cost \$500 million annually across Canada (2011 data), and the cost of a patient's care following an amputation does not return to the lower cost of their care before the amputation; it continues to rise.

Even though the community is making gains through new research, increases in the diabetic population mean more amputations overall. National and global trends emphasize the importance of diabetic foot research and preventative care.

Key Presentation Points

- The medical community needs more data on diabetic foot complications.
- Location matters in diabetic foot care. There are regional differences in amputation rates. Rates can be two or three times higher in the North, where health services are fewer and less accessible.

Global Trends

Samantha D. Minc, MD MPH FSVS FACS

Amputations are an unfortunately common complication of diabetic foot disease. This is a preventable issue, as 85% of lower-limb amputations are preceded by a diabetic foot ulcer or vascular disease. Common barriers to care include race and

**Samantha D. Minc, MD MPH FSVS
FACS**

Dr. Samantha Minc is an assistant professor of surgery and vascular surgeon at the West Virginia University Heart and Vascular Institute in Morgantown, West Virginia. She completed her fellowship in vascular surgery at the University of Chicago, her general surgery residency at the Yale–New Haven Hospital, Saint Raphael Campus, and obtained her medical degree from Tufts University School of Medicine. She also holds a certificate in Research in Health Disparities and a Master of Public Health from the University of Illinois at Chicago. Her focus is on health disparities research, particularly as it pertains to disparities in amputation rates for peripheral arterial disease (PAD) and diabetes. Dr. Minc studies both race-related and rural-related disparities by investigating the effects of socio-demographic and comorbidity related risk factors on the development of PAD and rates of amputations. Her long-term goal is to create a community-based intervention that will allow vascular surgeons to collaborate with community providers and patients to provide education, co-ordinate care and empower communities to reduce amputation rates and decrease disparities.



socio-economic status (those with public insurance are five times more likely to have an amputation than those with private insurance). The five-year mortality rate for above-knee amputations is higher than that of breast, prostate and colon cancer, with a 50% comorbidity at one year. The health-care cost of an amputation is about \$200,000 higher than lifetime health-care costs for patients without an amputation.

There are many barriers to amputation prevention, including lack of awareness and education, patient “apoplexy,” poor access to care, poor adherence to recommendations, poor co-ordination of care, social and cultural barriers, inability to cease smoking, lack of access to adequate offloading devices and, in Ontario, the cap on the number of podiatrists.



Practitioners also face organizational and institutionalized barriers such as lack of time, high costs of care, lack of research and resources, and culture (outdated practices or lack of education). These barriers can be dismantled, however, through care co-ordination, a focus on preventative care and public health, as well as comprehensive education for both practitioners and patients.

Amputation rates are a quality marker for diabetes care in the United States, an approach that should be widely spread across the globe. Preventable foot ulcers can be taken care of for a lower cost than amputation, while also improving quality of life and patient survival.

Key Presentation Points

- Amputations are devastating but preventable complications of diabetes and vascular disease, making them a marker for diabetes care quality.
- There are significant disparities in amputation rates related to socio-economic status and race. Geographic variation in amputation is likely a marker for significant variation in access to supports for positive social determinants of health.

Limb Preservation Clinics

Session Summary

This session defined the components of a successful limb preservation clinic and described the role of limb preservation clinics in preventing amputations. Speakers explored the collective knowledge and clinical skills required to run an effective limb preservation clinic. Discussions focused on successful and sustainable approaches to the development, implementation and evaluation of basic, intermediate and advanced limb preservation clinics in Canada and internationally. Speakers also discussed related national and international research initiatives.

Limb Preservation Clinics

Karim Manji, MD FRCFAS

Major amputations, compared with minor, are associated with lower quality of life, significantly lower survival rates and higher costs to society. Successful limb preservation clinics are multidisciplinary centres that facilitate collaboration and close communication among specialists dedicated to limb preservation. These centres focus on the reduction of major amputations and can reduce major amputations by up to 72% by implementing the “toe and flow” model (Lee Rogers).

Toe and Flow Model of Care

According to the DRRAFT guidelines, the vascular surgeon and the podiatric surgeon constitute the irreducible minimum in the formation of a diabetic foot team. Podiatric surgeons will assess, triage and surgically manage patients with infections, and will perform advanced wound care, bone biopsies and limb preservation surgery. Vascular surgeons are crucial in revascularizing a lower extremity. Over 65% of diabetic foot ulcers have an ischemic component, making vascular surgery an essential component to limb preservation. The toe and flow model of care provides a centralized patient access point and ensures referral to appropriate specialists.

Karim Manji, MD FRCFAS

Dr. Karim Manji is director of the Zivot Limb Preservation Centre in Calgary and president of the Association of Alberta Podiatric Surgeons. He is board certified by the American Board of Foot and Ankle Surgeons. He has an interest in diabetic foot, particularly ulcers and wound care. Dr. Manji is currently involved in research surrounding the impact of technology and its ability to improve healing times for diabetic foot ulcers and to reduce rates of re-ulceration. He is also interested in tendon releases in the foot and ankle to help treat diabetic foot ulcers.



The first toe-and-flow limb-preservation clinic in Calgary was created in 1999. Clinicians performed wound debridement in an office setting and minor amputations or limb-preservation surgeries in an operating room. This basic level of care presented many problems, as it was not sustainable and made collaboration difficult. There was also a lack

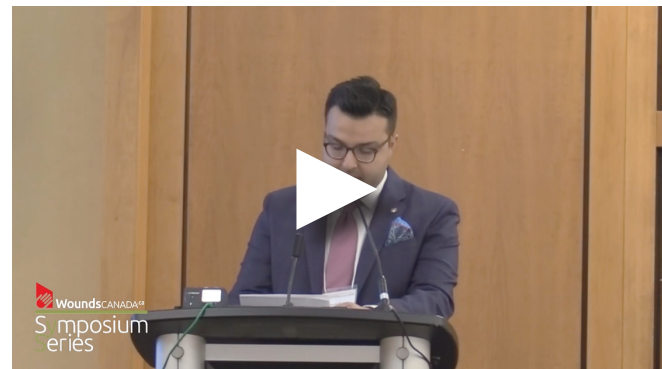


Table 1: Three Levels of Limb Preservation Clinics

	Aims	Location	Team Members
Basic	Prevention and basic curative care	Office, health centre, small regional hospital	Podiatrist, general practitioners, nurse
Intermediate	Prevention and curative care Advanced assessment and diagnosis	Hospital	Podiatric surgeon, vascular surgeon, diabetologist, diabetes educator
Centre of Excellence	Prevention and curative care for complex cases Advancement of knowledge base Education	University hospital	Podiatric surgeon, vascular surgeon, diabetes educator, orthopedic surgeon, orthotist, rehab therapist, psychologist, infectious disease specialist, diabetologist

“All the members of a ball team cannot pitch the ball, and no ball team wins which tries to have each member of the nine in the pitcher’s box. It is only common sense to provide in a large general hospital for specialization in diabetic surgery.” —Elliot P. Joslin, MD, quoted by Dr. Karim Manji

of understanding of podiatric surgery at that time. Changes were made in 2006 following the formal integration of podiatric surgery into Alberta Health Services. This allowed for consultation services to be paid for, which helped to build collaboration between in-patient and out-patient care, as well as with internal medicine specialists, vascular surgeons, hospitalists and infectious disease specialists. The number of minor surgery clinics began to increase in 2006, allowing procedures to be done under local anesthesia in a single clinic to increase efficiency and reduce treatment time. In 2014, the Zivot Limb Preservation Centre (ZLPC) introduced fully integrated podiatric and vascular surgery, as well as multidisciplinary care that included practitioners in the areas of endocrinology, internal medicine, infectious diseases, orthopedics, plastic surgery and diet. This model is based on the toe-and-flow model and aims to be a centre of excellence.

Key Presentation Point

- Three factors make a limb preservation centre successful: multidisciplinary care, a central access point and collaboration among all practitioners.

Limb Preservation Clinics

Matthew Smith, MSc MD RPVI FRCSC

As Smith’s interest lies in rural care, he tries to deliver care as close to patients’ homes as possible to ease their socio-economic burden. To achieve this goal, he identifies local champions willing and able to help the cause. Some of these champions include personnel at existing wound care clinics with procedure rooms and experienced nursing staff, podiatrists, home-care companies and any other interested health professionals.

Infrastructure resources are also crucial in delivering care to rural patients. These resources include travel clinics with space, nursing and clerical support; and alternatives to traditional clinic visits, such as virtual wound care and phone follow-up appointments.

To convince administrators and policy makers that providing flexible care in rural areas makes an impact, clinicians should present their ideas as a way for the hospital to support its mission



Matthew Smith, MSc MD RPVI FRCSC

Dr. Matthew Smith is a Royal College-trained surgeon in both general surgery and vascular surgery. He also completed the clinical investigator program with a master’s degree in medical science in molecular biology. He is currently an assistant professor of surgery and trauma team leader for the Division of Vascular Surgery, and Department of Surgery at Dalhousie University, and is a team member for the Multi-disciplinary Leg Ulcer Program at the Halifax Infirmary.



statement. Clinicians should also work to find an economic advantage for the hospital, such as a tax break that not only saves them money but actually returns money to the budget. For example, clinicians might present as a benefit of mobile and non-traditional clinics the savings that can be achieved by eliminating the cost of emergency transportation between care settings.

In the future, wait times could be greatly reduced by establishing connections from a central hub (like a centre of excellence) to outreach posts that can serve rural areas.

Virtual health is another viable solution to accessible limb preservation clinics. Initial outcome measures are still required to track success and savings for administrators, but these virtual clinics will save patients and hospitals time and financial resources.

Key Presentation Points

- Practitioners need to let patients know they're important.
- Stakeholders and interested health professionals should be assessed and examined in their care roles.
- Additional resources and outcome measurements are needed to advance research in limb preservation clinics.

Medical Management of People with Diabetic Foot Ulcers

Session Summary

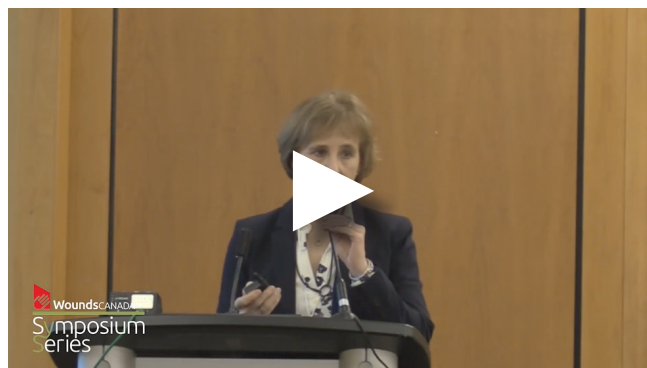
This session outlined the pathology of diabetes and diabetic foot disease. Speakers discussed the importance of current multidisciplinary approaches to the prevention, assessment and medical management of diabetes and diabetic foot ulcers. They provided an overview of emerging trends and research directions related to the medical management of diabetes and diabetic foot ulcers.

ABCD of Diabetes and Beyond

Robyn Evans, MD

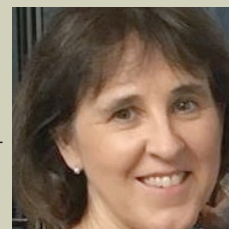
The presentation began with some statistics about diabetes:

- According to the new 2018 guidelines for diabetes management, the prevalence of diabetes is increasing.
- Diabetes is now the seventh leading cause of death in United States.
- In 2015, 1.5 million people were living with diabetes in Ontario. Of these, 16,000 to 27,600 had diabetic foot ulcers and nearly 2,000 had had an amputation below the knee.
- In Ontario, there is one diabetic-foot-related amputation every four hours.
- The pathway to ulceration and amputation is underpinned by vascular problems such as neuropathy, peripheral arterial disease and



Robyn Evans, MD

Dr. Robyn Evans is the medical director of the Wound Healing Clinic at Women's College Hospital in Toronto, involved in research and teaching. She also is a full-time family physician in the community. Dr. Evans is part of the faculty of the International Interprofessional Wound Care Course (IIWCC) through the University of Toronto. She is senior faculty for Wounds Canada and supports the development of interprofessional education programs for clinicians as well as delivery and evaluation of these programs. She is co-chair of the foot section for Diabetes Canada and co-chair of Wounds Canada's fall conference in Niagara Falls in October 2019.



In patients with PAD, every 1% increase in A1c results in a corresponding 28% increase in the incidence of vascular complication.

trauma. Prevention is key in these cases, as the lifetime risk of a diabetic foot ulcer is 15 to 34%.

The Diabetes Canada 2018 Clinical Practice Guidelines for the Prevention and Management of Diabetes in Canada presented 313 recommendations, which a subcommittee distilled down to 22. From these 22, three key messages were presented:

- Reduce the risk of complications by placing more focus on patient preference.
- Ensure safety and prevent hypoglycemia.
- Address self-management goals and barriers to self-management.

Updated ABCDESSSs of Care

The ABCDESSSs of care are designed to decrease the patient's risk of cardiovascular complication by targeting anti-inflammatory, anti-thrombotic and anti-proliferative effects.

ABCDESSSs of Diabetes Care

A: Target A1c at 7%.*

B: Target blood pressure at <130/80 mmHg.

C: Manage cholesterol.

D: Employ drugs (for blood pressure, cholesterol, etc.).

E: Exercise.

S: Stop smoking.

S: Employ self-management techniques (for stress, mental health, etc.).

S: Screen for complications such as neuropathy, nephropathy and retinopathy.

*Target A1c levels may differ. Generally, the target should be <6.5% to reduce risks of microvascular disease, 7% for most adults with diabetes, and 7.1 to 8.5% for the frail elderly, functionally dependent individuals or those with recurrent or severe risk for hypoglycemia.

When treating diabetes, the target HbA1c is 7% for most adults. Angiotensin-converting enzyme

(ACE) inhibitors and angiotensin receptor blockers (ARBs) are still required for most patients. Antiplatelet therapy is no longer recommended for primary prevention but is used in patients with multiple risk factors. Statins are used in all patients with cardiovascular disease and all patients over the age of 40. If a patient is under 40 with one other risk factor, they should also be put on statins.

Key Presentation Points

- Ulceration is not inevitable in diabetic patients. Practitioners need to optimize medical and lifestyle factors and encourage patient self-management.
- Prevention should be approached through a comprehensive, multifactorial strategy.
- The pathway to the prevention of diabetic foot ulcers targets neuropathy, PAD and trauma.



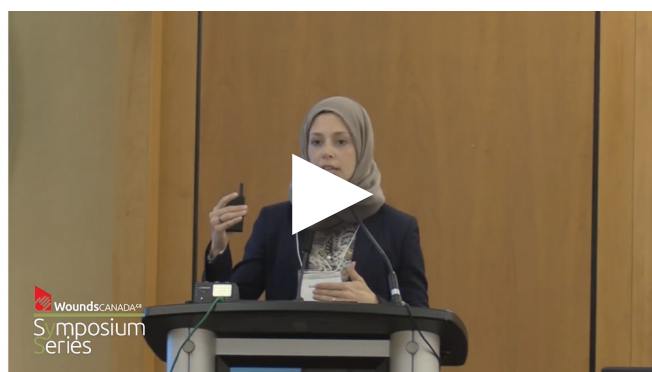
- Practitioners should tailor targets to the needs and preference of the patient, with the goal of reducing vascular risk.

Pathology of Diabetes and Diabetic Foot Disease

Zaina Albalawi, MD MSc FRCPC

Understanding the big picture of diabetes as a disease process ensures optimal care and allows for the development of targeted interventions to alter the disease's course.

Type 1 diabetes, about 10% of cases overall, is mediated by autoimmune genetic processes in a genetically susceptible person and results in progressive beta-cell destruction and insulin defi-

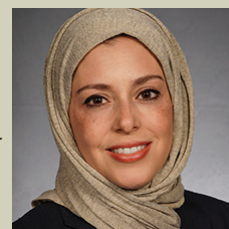


Zaina Albalawi, MD MSc FRCPC

Dr. Zaina Albalawi is an endocrinologist. She completed her internal medicine and endocrinology fellowship at the University of Alberta, along with a Master of Science in clinical epidemiology.

She co-authored the foot chapter for the 2018 Diabetes Canada Guidelines.

Her clinical practice has included limb preservation at the Diabetes Foot Clinic at the Royal Alexandra Hospital, and Diabetes and General Endocrinology at the Regional Diabetes Program and Baker Clinic in Edmonton. Her research interests include limb preservation in individuals with diabetes and postoperative outcomes. She resides in St. John's, NL.



ciency. Type 2 diabetes is mediated by genetic and environmental factors resulting in beta-cell destruction and dysfunction and insulin resistance. In type 1 diabetes, tight glycemic control reduces the risk of developing peripheral neuropathy when compared with conventional glycemic control; this is not true in type 2 diabetes.

Table 2 shows the pathogenesis of diabetic foot disease.

Key Presentation Points

- When treating diabetic foot disease, the distinct pathogeneses of types 1 and 2 diabetes need to be taken into account in research and clinical practice. This will allow practitioners to target management, thereby improving patient outcomes.

Table 2: Pathogenesis of Diabetic Foot Disease: Characteristics of Comorbid Conditions

Peripheral Neuropathy	Charcot Neuropathy	Vascular Disease	Peripheral Arterial Disease
<ul style="list-style-type: none"> • Vascular, metabolic and hormonal factors • Imbalance in nerve damage and nerve repair, resulting in progressive loss of sensation and structural nerve damage 	<ul style="list-style-type: none"> • Neurotransmitter and neurovascular components • Uncontrolled inflammation 	<ul style="list-style-type: none"> • Endothelial dysfunction and inflammation • Impairment of vascular repair capacities • Thrombotic state (alterations of coagulation, platelet reactivity, macroparticle release) • Epigenetic-driven transcription • Vascular hyperglycemic memory 	<ul style="list-style-type: none"> • Mismatch in supply and demand, resulting in hypoxia • Angiogenesis component • High metabolic demand that isn't met due to hypoxia and lack of angiogenesis • Cascade of inflammation

- Diabetic foot disease pathogenesis is complex, especially given the interplay with neuropathy and vascular disease.

Emerging Trends and Research Directions

Julie Lovshin, MD PhD FRCPC

Complications and comorbidities associated with type 2 diabetes are decreasing as a result of increased awareness and attention, and new types of drugs. The presence of diabetes and cardiovascular disease in a patient reduces life expectancy and increases the risk of premature mortality by 12 years. This has driven interest in four main research areas:

- Artificial pancreas/closed-loop systems (integrated insulin pumps)
- Growth of new beta cells (stem cell research)
- Diabetes technologies (e.g., contact lenses that sense glucose, apps to monitor ECG or heart rate, retinopathy telemedicine)
- Drug research and development

Research has led to the development of two new drug classes: SGLT2 inhibitors and GLP-1R agonists. SGLT2 inhibitors are oral interventions that lower blood sugar by acting at the kidney level to pass more sugar and salt in the urine. These drugs see modest A1c-lowering effects depending on glomerular filtration rate (GFR); the less renal function a patient has, the less this effect is seen. With these inhibitors, there is also a reduction in body weight by 2 to 3 kg and lowered systolic blood pressure. According to the U.S. Food and

Leading Mechanisms of Cardiovascular Protection

- Oxidative stress-induced endothelial cell dysfunction
- Vascular smooth muscle cell reactive oxygen species (ROS) production and proliferation
- Thrombosis
- Inflammation and atherogenesis
- Natriuretic/diuretic effect
- Renin-angiotensin-aldosterone system effect

Drug Administration (FDA), the risks posed by this drug include an increased risk of mycotic infection/urinary tract infection, especially in patients with existing risk factors.

GLP-1R agonists are injectable medications given once per week. These work by activating insulin release and decreasing glucagon in pancreatic beta cells. Results have shown a reduction in HbA1c (1–1.5%; not related to kidney function [GFR]), a decrease in body weight (3–5 kg), lowered systolic blood pressure (2–6 mmHg) and a decrease in cardiovascular/renal events in type 2 patients. The FDA notes side effects for this drug includes nausea, vomiting, diarrhea (10–20% experience this), and an increase in heart rate of 2 to 4 bpm.

Assessing the cardiovascular safety of new diabetes drugs is now a requirement in Canada. SGLT2 inhibitors seem to have a neutral effect on patients with high cardiovascular risk and type 2 diabetes. There is some research underway on

Julie Lovshin, MD PhD FRCPC

Dr. Julie Lovshin is a clinician scientist and assistant professor of medicine in the Division of Endocrinology and Metabolism, Department of Medicine, at the University of Toronto. She specializes in diabetes clinical care, with an emphasis on renal and cardiovascular complications. She directs the Diabetes Complications Clinical Research Laboratory at Sunnybrook Health Sciences Research Centre in Toronto, where her research focuses on mechanistic human investigation in renal, retinal and cardiovascular disease and function.



drugs that can actually reduce the risk of heart failure and diabetic kidney disease in patients with type 2 diabetes. This includes high-cardiovascular-risk patients such as those with PAD. GLP-1R agonists are completely safe for patients with high cardiovascular risk.

Key Presentation Points

- Type 2 diabetes management changes for patients with cardiovascular disease:
 - SGLT-2 inhibitors provide cardiovascular protection and are hemodynamic.
 - GLP-1R also provides cardiovascular protection and is an anti-atherosclerotic.
- Clinical research should aim to answer the following questions:
 - Will these drugs be used for primary cardiovascular protection?
 - Will these drugs be used for cardiovascular protection in those without diabetes?
 - Do these drugs attenuate peripheral vascular disease?
 - Do these drugs improve wound healing?

Vascular Topics

Session Summary

This session explored the clinical signs and symptoms of peripheral arterial disease (PAD) and the importance of early and accurate diagnosis. Speakers described relevant non-invasive and invasive vascular diagnostic imaging options (including specificity and sensitivity) for prescribers ranging from primary care providers to vascular specialists. The indications and key components of the medical and surgical management of PAD were discussed, along with trends and research directions related to the assessment and treatment of PAD.

Diabetes and Peripheral Arterial Disease: Diagnosis and Non-operative Management

Thomas F. Lindsay, BSc MDCM MSc

The clinical criteria for diagnosing peripheral arterial disease (PAD) include classical claudication and critical limb ischemia. To determine if classical claudication is present, clinicians can take a patient history and look for reports of muscle pain while walking that is reproducible daily and relieved by rest. Risk factors for PAD include smoking, obesity, sedentary lifestyle, diabetes and family history.

The prevalence of PAD in patients with diabetes is 40% (higher in non-Caucasians) and includes more involvement of distal vessels and co-existent sensory, motor and autonomic neuropathy.

Doppler criteria for PAD are an ankle-brachial pressure index (ABPI) of <0.9 or toe brachial pressure index (TBPI) of <0.7 if vessels are calcified. An arterial duplex can be used to examine flow,

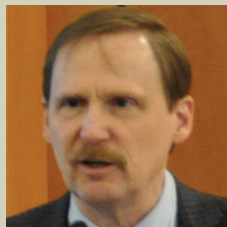
Key Components of PAD Assessment

- Temperature comparison
- Sensory duction
- Motor exam
- Pulse exam
- Signs of critical limb ischemia
- Use of a Doppler, as a foot pulse exam can be unreliable



Thomas F. Lindsay, BSc MDCM
MSc

Dr. Thomas F. Lindsay is a professor of surgery and a member of the Division of Vascular Surgery at the University Health Network and the University of Toronto. He graduated from McGill University (BSc, MDCM) and completed his general surgery and vascular surgery training at the University of Toronto. During his surgical training, he completed an MSc in the Surgical Scientist Program in ischemia/reperfusion injury of skeletal muscle. He completed a post-doctoral fellowship at Harvard Medical School funded by the Medical Research Council of Canada in the systemic consequences of organ ischemia. Dr. Lindsay is a clinician-scientist whose research now focuses on advanced endovascular interventions for thoracoabdominal and juxtarenal aneurysms and novel therapies to prevent post-intervention spinal cord complications.



areas of stenosis and stenosis severity. This test is useful in identifying and quantifying the disease and choosing a targeted treatment. Digital waveforms are also useful in diagnosing PAD, because the test allows for the assessment of individual toe blood flow.

Medical Management of PAD

Patients in this population need to receive proper foot care, footwear and wound care once an ulcer is present. Patients should be encouraged to cease smoking, manage obesity and hypertension, control blood sugar, manage cholesterol and lipids, increase physical activity, engage in antiplatelet or antithrombotic therapies and alter their diet. Major cardiovascular therapy trials are now actively enrolling patients with PAD.

Diabetes and Endovascular Interventions: Challenges and Opportunities

Jeffrey Siracuse, MD RPVI FACS

In recent years, there has been an explosion of endovascular interventions for PAD; however, there is no clear evidence of efficacy, and current data do not show unified results.

In one study comparing 2,446 endovascular procedures between both individuals with diabetes and those without, diabetic patients had more

comorbid conditions and major amputations, more heavily calcified lesions, more frequent multivessel disease and fewer infrapopliteal runoff vessels. Patients with diabetes were also shown to have an increased risk of mortality after 12 months when compared with non-diabetic patients. In a retrospective review of two randomized trials, however, patients with diabetes were five times more likely to have a major amputation than non-diabetics (34% vs. 20%), but there was no significant difference in mortality rate between the two groups. Another study of 73 individuals with diabetes found no significant difference in amputation rates after 36 months.

In an analysis of 598 patients with claudication (46.8% with diabetes), no difference was seen between those with diabetes and those without in terms of 12-month primary patency following a directional atherectomy. Insulin-dependent individuals were generally younger and were more likely to experience tissue loss, coronary artery disease or end-stage renal disease than non-insulin-dependent individuals and individuals without diabetes. Insulin-dependent individuals also had poorer wound healing rates and a higher risk for amputation, major amputation after three years, and re-intervention.

A study looking at 539 critical limb ischemia patients receiving either direct (63.4%) or indirect (36.6%) angiosome-directed revascularization found that complete wound healing rates were higher at 12 months among the direct revascularization patients, but that freedom from major adverse limb events (MALE) and amputation-free survival were not significantly different at up to 24



Jeffrey Siracuse, MD RPVI FACS

Dr. Jeffrey Siracuse is an associate professor of surgery at Boston University and an attending vascular surgeon at Boston Medical Center. He has clinical and research expertise in peripheral arterial disease and critical limb ischemia.



months. In this study, indirect angiosome-directed revascularization was seen to have an independent negative impact on wound healing.

In a retrospective analysis of 137 endovascular interventions on diabetic chronic limb-threatening ischemia (CLTI) patients with foot wounds, three groups of pedal arch statuses were examined: complete pedal arch, incomplete pedal arch and absent pedal arch. Healing, one-year limb preservation and one-year survival rates were significantly higher for the complete pedal arch group than for the other groups.

In a study of 93 diabetic patients with foot wounds and below-knee endovascular interventions, direct angiosome-directed revascularization was not found to affect healing time after three months or limb preservation rates after one year. Pedal arch procedures, on the other hand, were shown to have a positive impact on both factors.

Key Presentation Points

- Poor evidence has driven practice, causing an increase in endovascular interventions.
- Individuals with diabetes tend to have more advanced presentation and more severe disease.
- Diabetes itself is not likely the cause of higher amputation risk.
- Further investigations into angiosome and pedal arch procedures are needed.

Open Surgery for People with Diabetes: Still Relevant?

Randy P. Guzman, MD FRCSC FACS RVT RPVI

Patients with PAD may be asymptomatic or may present with claudication, critical limb ischemia, rest pain and/or ulceration or gangrene. Revascularization is indicated in patients with peripheral arterial disease and ABPI <0.90.

Endovascular interventions are now performed much more commonly than bypass surgery in the treatment of lower extremity PAD (LEAD). Out of 2.5 million inpatient diabetic foot ulcer cases, 16.5% require amputation and 8.5% require revascularization. Of those 8.5%, 43.5% receive open surgery and 51.1% receive endovascular intervention. Some 5.4% receive both.

Currently, there are no randomized controlled trials (RCTs) directly comparing open surgery and endovascular intervention for diabetic foot ulcers. Major outcomes are similar across all studies (including two meta-analyses where revascularization of the foot was successful). The results of both open surgery and endovascular procedures depend, however, on the expertise in a given centre. In one RCT, balloon angioplasty was associated with a significantly higher early failure rate than bypass surgery. In the BASIL trials, it was concluded that physicians should consider endovascular treatment first for a patient with a life expectancy of fewer than two years and vein bypass surgery first for patients with a life expectancy of more than two years. Patients who cannot have vein bypass are

Randy P. Guzman, MD FRCSC FACS
RVT RPVI

Dr. Randy Guzman is head of the Vascular Surgery Program at the University of Manitoba, the regional lead of vascular surgery for the Winnipeg Regional Health Authority, and site medical manager of the Department of Surgery at St. Boniface Hospital. He has been in clinical practice for more than 25 years. Dr. Guzman has extensive experience in clinical research, has been the director of the Vascular Clinical Research Program at St. Boniface Hospital for 15 years, and was the director of the Asper Clinical Research Institute for six years.





Vascular: Emerging Trends and Research Directions

Samantha Minc, MD
See Dr. Minc's bio, page 20.

The WIfI (wound, ischemia and foot infection) classification system was created to provide a comprehensive understanding of the threatened limb in order to guide management and expectations. This system looks at the wound, ischemia and infection to create a predictive model to guide care. Practitioners can use an interactive practice guideline app with patients to provide a calculation based on this classification system, which can then guide a conversation around treatment options.

Multidisciplinary teams have demonstrated significant improvement in amputation rates with simple, preventative care and co-ordination of specialists. The Preservation-Amputation Care and Treatment Program (PACT) from the Veterans Health Administration in the United States showed an 80% risk reduction (2005), the Lower Extremity Amputation Program (LEAP) study showed a 79% risk reduction in Louisiana (2000), and the Multidisciplinary/Toe and Flow teams (podiatrist and vascular surgeon) showed a 36 to 86% risk reduction (2010). These results extend to Indigenous communities, as the LEAP plus Staged Diabetes Management (SDM) study showed a 50% risk reduction in a Chippewa First Nation community (2001).

Amputation is a contextual issue; in other words, where you live matters. By definition, patients who

probably better served by an attempt at endovascular intervention as opposed to a prosthetic bypass. Endovascular treatment as a first approach, however, is not necessarily a “free shot,” as the success of subsequent bypasses may be compromised if the endovascular procedure fails.

The 2016 American Heart Association (AHA) Guidelines for Revascularization Surgery provide the following recommendations:

- In patients with DFU who have PAD, revascularize by either surgical bypass or endovascular therapy.
- In functional patients with long-segment occlusive disease and a good autologous conduit, bypass is likely to be preferable.
- The choice of intervention depends on the degree of ischemia, the extent of arterial disease, the extent of the wound, the presence or absence of infection and the available expertise.

Key Presentation Points

- Be aware of the current role of open revascularization.
- Understand the current guidelines regarding the role of open revascularization.
- Appreciate the importance of a multidisciplinary team for limb preservation.



live in rural areas and have rarer diseases are few in number, making statistical analysis difficult. This does not mean, however, that these patients should not be provided with equal access to high-quality wound care. Bayesian methods allow for a more granular statistical picture and a more effective allocation of resources. The problem is that the current literature focuses on descriptive data rather than inferential information.

Some other barriers to practice change include lack of education, poor availability of protocols, lack of specialists, poor access to care at all levels and lack of time. Some solutions to overcome these barriers include implementing incentives and payment models, implementing standardized protocols and encouraging improved communication between patients and practitioners.

Key Presentation Points

- Vascular surgeons employ strategies at multiple levels to reduce amputation risk. These include societal guidelines, algorithmic protocols and multidisciplinary teams.
- At all levels, co-ordination and access to care is key. Practitioners need to understand the issue of vascular surgery and related diseases at a broad social level.

Infection

Session Summary

This session outlined the risk factors associated with developing a diabetic foot infection and the incidence and impact of this condition. Speakers described the role of biofilm and latent infection in diabetic foot ulcers and discussed strategies used to reliably diagnose osteomyelitis in the diabetic foot. Speakers compared medical and surgical management strategies for people with diabetes, infection, osteomyelitis and peripheral arterial disease. This session also explored emerging trends and research directions related to the diagnosis and

management of infection and osteomyelitis in the diabetic foot.

Diagnosing Infections in the Diabetic Foot

Zain Chagla, MD FRCPC

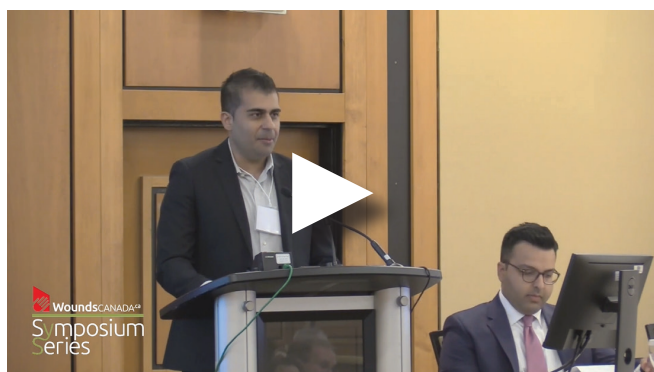
Diabetic foot ulcers are a massive burden on Canada's health-care systems, resulting in approximately 16,000 hospitalizations, 31,000 emergency room visits and 11,000 operating room visits per year. The financial cost of these cases is \$547 million annually (\$21,000–\$50,000 per clinical case), not including secondary costs associated with disability.

The most important parts of an examination for possible infection are the patient history and the physical exam. Clinicians should assess for calor (warmth), dolor (pain), tumor (swelling) and rubor (redness). Note that vascular disease may affect rubor and calor, and neuropathic disease can mask pain. Other signs of infection include purulence, concomitant ischemia, foul odour, surrounding cellulitis and long duration of the wound. While examining the wound, clinicians should debride the overlying membrane to get a thorough examination of the wound characteristics. They should expose any tracts or tunnels. It is important to identify any abscesses or contiguous tracts.

Zain Chagla, MD FRCPC

Dr. Zain Chagla completed his MD at Queen's University, Internal Medicine at Western University, and Infectious Diseases at McMaster University. He also has an MSc and Diploma in Tropical Medicine from the London School of Hygiene and Tropical Medicine. He currently practises as an infectious diseases physician. He is an assistant professor of medicine at McMaster University, and the medical director for Infection Control at St. Joseph's Healthcare and Niagara Health System. Dr. Chagla has interests in medical education, health-care technology, global health and transplant infectious diseases.





When considering microbiologic testing, clinicians should swab wounds using the Levine method: cleanse the wound, debride non-viable tissue, and swab the cleanest, deepest area of the wound possible. There is often mixed growth of varying bacteria, but clinicians should look for staph, strep, pseudomonas and/or coliforms.

When ruling out osteomyelitis, clinicians should determine a pre-test probability in order to save resources by avoiding expensive, time-consuming tests for patients who are unlikely to have this complication. If the wound is superficial and unlikely to probe to bone, further diagnostic testing should not be initiated. Similarly, if the wound is deep and very likely to probe to bone, further testing should not be initiated. However, if the wound is in the “sweet spot” and difficult to stage, diagnostic radiology for an accurate diagnosis should be considered.

Table 3 explains characteristics of the different types of diagnostic testing.

Barriers to care in this area include a lack of understanding of pre-test probability, resulting in the inability to refer patients to the appropriate diagnostic test. Clinicians should use judgement

Table 3: Types of Diagnostic Testing

Test	Characteristics
Probe to bone	<ul style="list-style-type: none"> • Useful adjunct in patients with a high pre-test probability of an infection • Use a metal probe to probe the deepest tract until you feel bone, which is often not obviously visible.
Bone biopsy	<ul style="list-style-type: none"> • Gold standard test • Histopathologic evidence of osteomyelitis plus cultures • Techniques include needle puncture, image-guided, rongeur • Requires expertise, especially if the tract is not visible • Has the potential for superficial contamination of cultures; interpret with caution
Plain radiography	<ul style="list-style-type: none"> • Inexpensive and widely available • Takes time for change to occur • First-line test for all patients requiring diagnostic testing
MRI	<ul style="list-style-type: none"> • Use after plain radiography. • High sensitivity (90%) and specificity (85%) • Distinguishes osteomyelitis from other conditions such as Charcot foot, remodelling • Note: sometimes only picks up superficial cortical versus medullary infection • Costly
Bone and WBS scan	<ul style="list-style-type: none"> • An alternative to MRI; useful if the patient has contraindications for MRI • Burdensome on patient, particularly in outpatient settings (requires 2–3 prolonged trips to the centre) • Can be confounded by remodelling, Charcot foot, fractures • Interpret only the area involved with the wound.
Ultrasound	<ul style="list-style-type: none"> • Poor visualization of bone • Helps with abscesses and deep tissue structures
CT scan	<ul style="list-style-type: none"> • Limited value when compared with nuclear/MRI
FDG and PET	<ul style="list-style-type: none"> • Promising but expensive

when ordering tests and should interpret results wisely.

Key Presentation Points

- Infection in the diabetic foot is a common problem requiring clinical judgement.
- Swab properly and interpret microbiology accurately.
- Generate a pre-test probability for osteomyelitis. If there are low pre-test results, don't use testing, and skip straight to treatment. If pre-test results are high, don't use testing: assume osteomyelitis. If the pre-test is difficult to stage, order further tests.

Emerging Trends and Research Directions

Christopher Kandel, MD

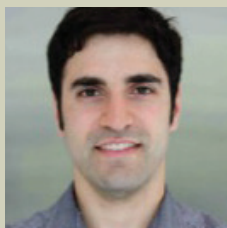
There is no substantial difference in the penetration of various antibiotics into the bone. Oral versus intravenous (IV) interventions were studied in an OVIVA trial: failure rates following a median treatment course of 75 weeks were 13% for oral and 15% for IV. This study should be interpreted with caution, however, since there was some heterogeneity of infections included and because the majority of patients underwent surgery.

When treating chronic osteomyelitis of the calcaneus, where surgery is not feasible, consider the pill-in-pocket approach, chronic suppression or evaluating each flare individually. There is little literature on how to most effectively treat patients with recalcitrant osteomyelitis.

Unmet research needs pose a large problem to the treatment of osteomyelitis. More research

Christopher Kandel, MD

Dr. Christopher Kandel is an infectious diseases physician working at University Health Network and Sinai Health System. He is currently a PhD candidate in clinical epidemiology at the University of Toronto with a specific research interest in improving the management of bone and joint infections.



is needed in the areas of treatment success (e.g., when to cease antibiotic use), appropriate approaches to chronic osteomyelitis and standardizing the definition of effective debridement.

Key Presentation Points

- Oral antibiotics can be as effective as intravenous antibiotics.
- The optimal duration of antibiotic use for osteomyelitis is uncertain, but longer seems to be the rule.
- Debridement can be crucial or aggravating, depending on the situation.

Determining the Degree of Amputation in Diabetic Foot Infections: Does Every Patient Need a BKA?

Warren C.W. Latham, BSCH MD FRCS(MC)

Between 15 and 20% of individuals with diabetes develop a foot ulcer in their lifetime. Eighty percent of amputations in individuals with diabetes are preceded by a diabetic foot ulcer (DFU), and

Table 4: Assessment of Diabetic Foot Ulcers

Assessment Area	Characteristics
Patient history	Glycemic control, functional level, patient factors
Wound characteristics	Depth, size, location, colour, ischemia, exposed bone, deformity, callus, ulceration, infection, necrosis, drainage, pain
Examination results	Monofilament, neuropathy, tuning fork
Vascular assessment	Palpation, temperature, ABPI, TBPI, TcPO ₂ , Duplex vascular ultrasound
Presence of osteomyelitis	Cellulitis (don't be fooled by Charcot), erysipelas, acute osteomyelitis, chronic osteomyelitis

50% of all non-traumatic amputations are related to diabetic foot disease. Five-year mortality following an amputation ranges from 50 to 68%, increasing based on the level of amputation.

Benefits of Debridement

- Removal of necrotic tissue
- Drainage of “pus”
- Healing stimulus
- Pressure reduction

More than 50% of patients with diabetes also experience neuropathy, which leads to a seven-times increase in the risk of developing a DFU. (See Table 4 for characteristics of areas important in assessing a DFU.) The suggested follow-up window for neuropathic patients depends on wound status. If a wound is completely healed and healthy (Level 0), follow up annually; if a patient experiences sensory neuropathy (Level 1),

follow-up is advised every 3 to 6 months; when sensory neuropathy, deformity and/or PAD is present (Level 2), follow-up is advised every 1 to 3 months; if a patient experiences sensory neuropathy and has previously had a DFU or amputation (Level 3), follow-up is recommended every 1 to 4 weeks.

Whether amputating or preserving a limb, the wound must heal in order to prevent future ulceration and amputations and to improve quality of life. Pinzur et al. (2011) presented essential questions to ask before making a decision to preserve a limb:

- Will it outperform a prosthetic limb?
- What is the realistic endpoint?
- What is the cost for the patient?
- How will it affect the patient's quality of life?
- What are the risks?

It is critical to have an honest conversation about these issues with the patient prior to making a decision. Clinicians must take patient preference into account, especially when considering the desired level of functionality following treatment.

Warren C.W. Latham, BSCH MD FRCSC MSC(C)

Dr. Warren Latham is an orthopedic surgeon subspecialist in foot and ankle surgery with a focus on diabetic foot pathology and reconstruction, and minimally invasive surgical techniques in foot and ankle surgery. He is a clinical adjunct at the University of Toronto, and staff surgeon at Scarborough Health Network. Dr. Latham is currently completing a master's in surgical science and practice at Oxford University. He is a mentor in the University of Toronto Foot and Ankle Fellowship program and is an executive member of both the Canadian Orthopaedic Association (COA) and Canadian Orthopaedic Foot and Ankle Society (COFAS).



The goals of amputation include removing all infected necrotic and painful tissue, fashioning an adequate stump for use of a prosthesis and achieving successful wound healing. When considering whether or not a patient is a good candidate for amputation, it is essential to take into account the extent of tissue loss, the anatomy of reconstruction, associated comorbidities, vascular status and sepsis. A limb may be considered unsalvageable for a number of reasons, including patient factors, clinical judgement and clinical examination (e.g., infection, poor skin quality, ischemia). In these cases, amputation should not be considered a failure in treatment.

VIPs of Treating DFUs

- V: Vascular supply
- I: Infection control
- P: Pressure offloading
- S: Sharp surgical debridement

Types of Offloading

- Total contact cast
- Removable cast walker
- Scotch cast boot
- Surgical shoes
- Crutches, knee walker, wheelchair
- Ankle stirrup

Key Presentation Points

- An appropriate amputation in the face of an unsalvageable limb is not a failure of conservative management.
- Patient factors, including desired levels of function postoperatively, are critical variables when discussing amputation level.
- No matter whether preservation or amputation is selected, the end goal must be for the wound to heal.
- Understanding biomechanics is key in minimizing recurrent ulceration following amputation.

Practical Tips and Tricks to Prevent Major Amputations with Diabetic Foot Infections

Karim Manji, MD

See Dr. Manji's bio, page 21.

The WIfI classification system helps clinicians determine a patient's risk of amputation based on three factors: wound, ischemia and foot infection. The wound score is based on the extent of tissue loss, the ischemia score depends on perfusion, and the foot infection score is based on the extent of infection. The primary goal of treatment should be to reduce a patient's WIfI score while maintaining maximum function.

When surgically managing infection, the clinician should obtain deep cultures, evacuate infection, decompress compartments, pay attention to flexor tendons and extensor tendon tracking, and pack the wound open.

Key Presentation Points

- Use the WIfI score to determine the severity of a wound and seek to decrease the score through treatment.
- Drain any infection in a wound as soon as possible.



Wound Management

Session Summary

This session explained the utility of wound debridement in the treatment of diabetic foot ulcers and presented the indications and contraindications related to the various methods of

debriding diabetic foot ulcers. Speakers discussed the evidence supporting the use of dressings and outlined the methods used to select the most appropriate dressings and advanced therapies in the treatment of diabetic foot and arterial ulcers. Also explored were emerging trends and research directions related to managing diabetic foot ulcers.

Wound Debridement in the Diabetic Foot

Alan Rogers, MBChB FC Plast Surg (SA) MMed

The impact of research in the area of diabetic foot ulcers is limited by a lack of high-quality studies, bias caused by industry sponsorship and difficulties in standardization.



Alan Rogers, MBChB FC Plast Surg (SA) MMed

Dr. Alan Rogers completed his medical degree at the University of Cape Town (UCT) in 2002. Following internship and community service, he was a clinical fellow in plastic surgery at the Queen Victoria Hospital in East Grinstead in England (2005/2006). He undertook general surgery (2007 to 2010) and plastic surgery (2010 to 2014) specialty training in Cape Town. After a fellowship in Total Burn Care at the Ross Tilley Burn Centre (RTBC) at Sunnybrook Health Sciences Centre, he took up his current position as attending burn surgeon. Dr. Rogers was awarded an FRCSI in 2016 and an MSc in quality improvement from the University of Toronto in 2017. His clinical and research interests include acute and reconstructive burn surgery and the surgical management of complex wounds and scars.



Debridement is a key component of care when treating patients with diabetic foot ulcers. Debridement removes revitalized or infected tissue until surrounding healthy tissue is exposed. This allows for assessment of the capacity to heal and identification of the most appropriate closure method. There are various types of debridement, including mechanical debridement, autolytic debridement, maggot therapy, ultrasound, enzymatic debridement and negative pressure wound therapy (see Table 5). Surgical debridement is preferred for patients with significant necrosis and infection, especially if the wound is moist or stagnant.

Table 5: Characteristics of Debridement

Type of Debridement	Characteristics
Mechanical (wet-to-dry approach)	<ul style="list-style-type: none"> • High nursing cost; low product cost • Can be painful
Autolytic	<ul style="list-style-type: none"> • Moist wound environment • Hydrogels are preferred • Minimal pain • Fairly selective
Maggot therapy	<ul style="list-style-type: none"> • Discriminates between necrosis and granulation • Rapid • Note: bagged therapies are typically more acceptable to patients
Ultrasound	<ul style="list-style-type: none"> • Considered less painful than sharp debridement
Negative pressure wound therapy	<ul style="list-style-type: none"> • Drains exudate • Reduces edema • Contracts wound edge • Alters blood flow

Key Presentation Points

- Evidence does not favour one method of debridement over any other.

Dressings and Advanced Therapies in Diabetic Foot Ulcers

Afsaneh Alavi, MD MSC FRCPC

When choosing a dressing, consider healing status, patient preference, cost and cost-effectiveness, wound shape, wound location, exudate, dressing availability, bioburden, periwound skin and edema. Clinicians should remember the generic name and category of each dressing, so they are able to adapt to what is available in individual clinics and areas.

Debridement is critical before choosing a dressing. Take the time to debride properly!

There are three basic types of dressings. When using absorptive dressings, thinner is typically better, as it adds pressure to the area. Adhesive dressings such as films and hydrocolloids are not used as often with diabetic foot ulcers. The third category is the contact layer or mesh dressings, which can contain antiseptics. Other products, such as collagen-based dressings, which stimulate healing and decrease matrix metalloproteinases; smart

Afsaneh Alavi, MD MSC FRCPC

Dr. Afsaneh Alavi is an assistant professor of dermatology at the University of Toronto. She completed her dermatology residency, a fellowship in wound healing and a master of science degree in community health at the University of Toronto. She is a board member of the Canadian Dermatology Association (CDA). She received the Colin A. Ramsay Resident Teacher Award from the University of Toronto, the Women's Dermatology Mentorship Award, and the practitioner of the year award from the CDA.



dressings, which can detect pH; bio-engineered skin; skin substitutes; and negative pressure wound therapy are also available in some areas.

More research is needed to substantiate the role of available dressings and products on a day-to-day

“Working as a team covers the blind spots that each clinician’s individual experience and bias create.” —Dr. Afsaneh Alavi

basis. Products must be assessed not only for clinical effectiveness, but also for cost-effectiveness. It is important to note that dressing products are not the major cost driver in wound care: dressings account for only 15 to 20% of the cost, with nursing time accounting for 30 to 35% and hospitalization 50%.

Key Presentation Points

- Improving the clinical outcome of diabetic foot ulcers remains a challenge.
- More head-to-head studies are needed to show the effect of dressings.
- Clinical effectiveness and cost-effectiveness are both important factors in dressing selection.
- Expensive dressings do not necessarily offer healing advantages when compared with more basic, inexpensive products.

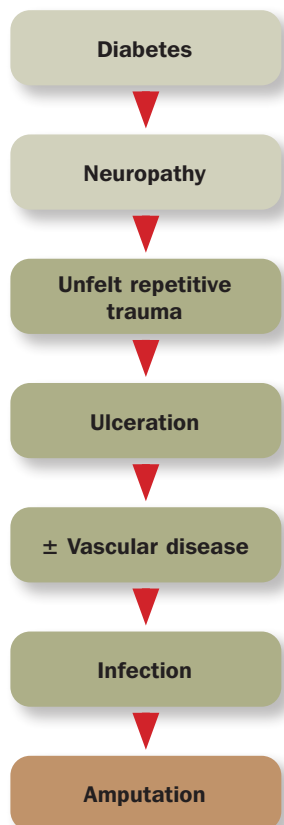
Emerging Trends and Future Directions for the Diabetic Foot

Lee C. Rogers, DPM

Around the world, a limb is lost every 30 seconds due to diabetes. Key risk factors for developing a diabetic foot ulcer include peripheral neuropathy, peripheral arterial disease, foot deformity and history of ulceration or amputation. Up to 25% of those with diabetes will develop a foot ulcer in their lifetime.

A patient's risk for lower-extremity amputation (LEA) increases with ulceration (84%), infection (59%) and gangrene (55%). In the U.S., a patient's risk also increases if they are older, male, from an ethnic minority, or have public insurance rather than private. LEAs often follow a pathway of the disease process (see Figure 2). The five-year mortality rate following an LEA is 70%.

Figure 2: Pathway to Lower-extremity Amputation



In 2007, \$147 billion was spent on diabetes in the U.S., \$116 billion of which went to direct

“I marvel that society would pay a surgeon a large sum of money to remove a person’s leg . . . but nothing to save it.” —Bernard Shaw, quoted by Dr. Lee Rogers

costs. One-third of these costs can be attributed to lower-extremity complications. Amputation is the sixth most costly type of surgery; mean cost per surgery in the U.S. in 2007 was \$20,200. The average hospital stay for a diabetic foot ulcer is 7.6 days; the average for LEA is 9.6 days. Following healing, 50% of patients with a diabetic foot ulcer re-ulcerate within one year.

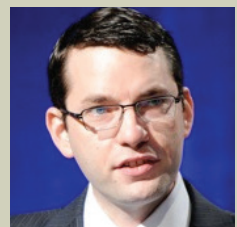
The rationale for primary amputation assumes that patients will ambulate successfully with a prosthesis. In reality, barely one-third of patients (47% below-knee and 15% above-knew) are successfully fitted for a prosthesis; thus many are not able to walk.

New thermometry technologies are being developed to help clinicians predict and thus prevent amputation in at-risk patients. Automated home temperature monitoring systems calculate



Lee C. Rogers, DPM

Dr. Lee Rogers is the founder and medical director of the Amputation Prevention Centers of America, a company that manages 225 wound centres in 35 states. He has published more than 150 articles or book chapters on the diabetic foot and systems of care. His work has been featured in the *Wall Street Journal*, *US News and World Report*, *NBC News*, and he's been a guest on ABC's *The Doctor's Show*.



trends over a set period of time based on daily measurements. To use these systems, patients stand on a mat for 20 seconds once per day, and the temperatures are updated to a server that forecasts based on pre-set thresholds. The temperature trends identified can help clinicians predict ulceration up to a month before occurrence.

Key Presentation Points

- Preventing ulcers is key to preventing amputations. Watch for these signs of inflammation: dolor, rubor, tumor and calor.
- Thermometry is one way of predicting ulceration in at-risk patients.



ization are the most important initial treatments; there is little evidence to support the effectiveness of available pharmacological therapies to promote healing. Patients with inactive inflammation and no increases in temperature should be treated with accommodative footwear.

Offloading

Session Summary

This session presented evidence supporting offloading as a treatment for diabetic foot complications and explored common non-surgical and surgical approaches to offloading the diabetic foot and Charcot foot, including indications, contra-indications and effectiveness. Speakers described strategies for offloading the diabetic foot in resource-limited settings and how to identify patients with diabetic foot complications or Charcot foot who are surgical candidates. This session also discussed emerging trends and research directions related to the non-surgical and surgical management of diabetic foot and Charcot deformity.

Surgical and Non-Surgical Approaches to Managing the Charcot Foot

Lee C. Rogers, DPM
See Dr. Lee's bio, page 38.

Charcot foot can be treated medically or surgically. Medical treatments for patients with active inflammation and increased temperature include offloading, bisphosphonates, intranasal calcitonin, and bone stimulators. Offloading and immobil-

Given the high rates of recurrence, patients with Charcot foot require routine follow-up.

Surgical treatments for Charcot foot include exostectomy and reconstruction. Exostectomy can be useful for patients with a plantar prominence that is not amenable to offloading. Reconstruction is indicated for non-healing foot ulcers or those with impending ulceration, osteomyelitis or a non-functional extremity. The goal of this surgery is a stable, plantigrade foot.

When offloading, removable options result in lower patient compliance. In one United Kingdom-based study of 288 patients with Charcot foot, the use of nonremovable offloading (TCC) led to quicker resolution than removable offloading (9 vs. 12 months).

When you see severe inflammation, consider it Charcot foot until proven otherwise; it is a medical emergency.

Surgical and Non-Surgical Approaches to Offloading the Diabetic Foot

James Hill, DPM FACFAS

Non-surgical Approaches to Offloading

In 2019, the International Working Group on the Diabetic Foot issued recommendations for the use of offloading in patients with diabetic foot ulcers. These recommendations are summarized in Table 6 below.

Types of Offloading Devices

Non-removable Options	<ul style="list-style-type: none"> • Total contact cast • Non-removable controlled ankle motion (CAM) boot—rendered immovable by applying a layer of cast or tie wrap around the device
Removable Options	<ul style="list-style-type: none"> • Knee-high CAM boot • Ankle-high CAM boot • Felted foam • Standard therapeutic footwear (e.g., diabetic shoes)

Table 6: Recommendations for Offloading the Diabetic Foot

Patient Status	Recommended Treatment
Patient with diabetes and a neuropathic plantar forefoot or midfoot ulcer	Non-removable knee-high offloading device (total contact cast or non-removable knee-high walker) with an appropriate foot-device interface
Patient with diabetes and a neuropathic plantar forefoot or midfoot ulcer when a non-removable knee-high offloading device is contraindicated or not tolerated	First choice: Removable knee-high offloading device with an appropriate foot-device interface. Encourage the patient to consistently wear the device. Second choice: Removable ankle-high offloading device
Patient with diabetes and a neuropathic plantar forefoot or midfoot ulcer when none of the above-mentioned offloading devices is available	Felted foam in combination with appropriately fitting conventional or standard therapeutic footwear
Patient with diabetes and a neuropathic plantar digital ulcer when non-surgical offloading treatment fails	Digital flexor tenotomy
Patient with diabetes and a neuropathic plantar forefoot or midfoot ulcer with either mild infection or mild ischemia	Non-removable knee-high offloading device
Patient with diabetes and a neuropathic plantar forefoot or midfoot ulcer with both mild infection and mild ischemia, or with either moderate infection or moderate ischemia	Removable knee-high offloading device
Patient with diabetes and a neuropathic plantar forefoot or midfoot ulcer with both moderate infection and moderate ischemia, or with either severe infection or severe ischemia	Address the infection and/or ischemia. Consider using a removable offloading intervention based on the patient's functioning, ambulatory status and activity level.
Patient with diabetes and a neuropathic plantar heel ulcer	Knee-high offloading device or other offloading intervention that effectively reduces plantar pressure on the heel and is tolerated by the patient
Patient with diabetes and a non-plantar foot ulcer	Removable ankle-high offloading device, footwear modifications, toe spacers or orthoses, depending on the type and location of the foot ulcer



Surgical Approaches to Offloading

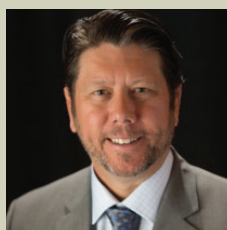
There are four classifications of diabetic foot surgery:

- Elective: reconstructive procedures on patients who do not have a loss of protective sensation (LOPS)
- Prophylactic: reconstructive procedures performed to reduce the risk of ulceration or re-ulceration in patients who have LOPS and do not have a wound at present
- Curative: procedures performed to assist in the healing of open wounds
- Emergent: procedures performed to arrest or limit the progression of infection

Some common types of reconstructive surgeries include Charcot reconstruction, minor amputation (digit, ray, metatarsal) and major amputation (below- or above-knee).

James Hill, DPM FACFAS

Dr. Hill has been registered as a chiropodist in Ontario and a licensed podiatric physician and surgeon in Michigan for 20 years. After completing his undergraduate studies at Wayne State University in Detroit, Michigan he obtained his Doctor of Podiatric Medicine degree in Chicago, Illinois. He then completed a two-year podiatric surgical residency in Houston, Texas. Dr. Hill is a fellow of the American College of Foot and Ankle Surgeons and board certified in Foot Surgery and Reconstructive Rearfoot and Ankle Surgery by the American Board of Foot and Ankle Surgery. In addition to serving on the Board Certification Case Review Committee for the American Board of Foot and Ankle Surgery, James is also a residency site evaluator for the Council on Podiatric Medical Education in the United States. Dr. Hill practises part-time in Windsor, Ontario, with his podiatrist wife, Millicent Vorkapich-Hill, DPM, and also part-time in Detroit, Michigan, at the John D. Dingell VA Medical Center, all while currently serving as the president of both the Ontario Podiatric Medical Association and the Canadian Podiatric Medical Association.



Several barriers currently impede optimal care of this patient population, including a hard cap on the number of podiatrist class registrants with the College of Chiropodists (in Ontario). In addition to this cap, the scope of practice for podiatrists in Canada is limited in all provinces and territories except Alberta and British Columbia. Limited funding for offloading devices and limited access to competent prescribers also make it difficult for patients to receive optimal care.

Key Presentation Points

- Appropriate offloading is necessary in order to heal a diabetic foot ulcer.
- Research on diabetic foot ulcers in Canada is limited.
- Both podiatrists and podiatric surgeons are key members of the multidisciplinary team evaluating and treating the diabetic foot, and access to their full range of competencies is severely limited in Canada.

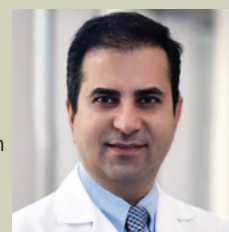
Emerging Trends and Research Directions

Bijan Najafi, PhD

As the population ages, health-care providers are facing a significant change in patient demographics. More than 25% of the United States population aged 65 and over has diabetes, which trans-

Bijan Najafi, PhD

Dr. Bijan Najafi is currently serving with the Baylor College of Medicine, Department of Surgery, as a tenured professor and director of clinical research in the Division of Vascular Surgery. His career has focused on developing technologies that improve stability, healing and mobility worldwide through research and the mentorship of young scientists and engineers and collaboration with clinical partners. Over past 20 years, he and his team have created several models, methods and "smart" wearable technologies that enable objective monitoring cognitive-motor, remote monitoring of frailty, cognitive function, risk of falling and new digital platforms that have shown enormous promise in preventing limb and life-threatening gangrene as well as providing early-warnings to prevent life-threatening falls and fractures in older adults.





lates to over 30 million adults, 12 million (40%) of whom are older adults.

Aging impacts physiology and biomechanics of lower extremities, including skin, soft tissue, joint range of motion, and causes arch collapse, foot deformity, poor gait and poor balance. Alteration in the biomechanics of the lower extremities due to aging can affect diabetic foot management because of poor adherence to offloading and the high rate of recurrence of ulcers.

Adherence to offloading is a key indicator of wound healing. Many patients report foot pain and postural instability (poor balance) as reasons they fail to use offloading devices consistently. Because of this, clinicians must work with patients to maximize their mobility with offloading devices and discuss the importance of using these devices consistently, as prescribed. Clinicians should ensure their patients understand that offloading is not just for walking; many patients stand for three times as long as they walk each day, whether or not they have an ulcer.

It is also important to consider that prolonged immobilization of the foot may lead to frailty. In frail patients with an ulcer, prolonged offloading can lead to slow muscle recovery, which can then lead to ulcer recurrence. Overall, the recurrence rate for diabetic foot ulcers is about 40% within the first year.

Lower-extremity biomechanics can be improved to reduce the risk of ulcers in three ways:

- Lower-extremity exercise: decrease the development of diabetic peripheral neuropathy (DPN), decrease DPN symptoms, increase balance, increase gait speed

- Assistive footwear/exoskeleton: decrease the risk of falling, increase balance, increase step width, increase gait speed
- Plantar stimulation: increase gait speed, increase balance, decrease DPN symptoms

There is evidence that foot and ankle exercises can address some age-related biomechanics factors, including foot strength, lower-extremity range of motion, balance, gait and frequency of falls.

Key Presentation Point

- As the patient population ages, there is urgent need to tailor diabetic foot management for older adults.

Special Topics

Session Summary

This session explored the risks and challenges of treating patients with renal disease and diabetic foot ulcers. Speakers described non-surgical and surgical approaches to managing diabetic foot ulcers on the heel and discussed interdisciplinary and self-management strategies to support people with a non-healing or non-healable diabetic foot or arterial ulcer.

Diabetic Foot Ulcers in Renal Patients: Risks, Challenges and Opportunities for Quality Improvement

Lisa Dubrofsky, MDCM FRCPC

Patients living with end-stage renal disease (ESRD) are 20 times more likely to require amputation than patients without ESRD. According to a 2016 systematic review of six studies, the prevalence of amputations among patients with both diabetes and ESRD is between 18% and 26.5%. Additional comorbidity risk factors leading to amputation in patients with ESRD include past history of a foot ulcer (70x), peripheral arterial disease (9x) and peripheral neuropathy (3x). The one-year mortality rate post-amputation in the ESRD popula-

The Importance of Foot Checks

In December 2018, an audit of incident dialysis patients at Sunnybrook Health Sciences Centre was performed. Of 22 patients with ischemic heart disease who started in-centre, nine did not have the initial foot check form filled out within the first month, and eight did not have it filled out at all. It was found that patients receiving foot checks were being identified with symptoms of claudication but were not being referred.

Foot checks performed in the hemodialysis unit have been shown to significantly reduce major lower-limb amputations (17%). In a survey of 10 physicians and nurse practitioners, monthly foot checks helped to identify new diabetic or ischemic wounds and to identify at-risk patients in 50% of cases.

tion is 43.6%, but this process is thought to be largely preventable through comprehensive diabetic foot ulcer care.

Recommended practices for preventing diabetic foot ulcers (DFUs) include physician education, patient and caregiver education, smoking cessation, glycemic control, custom footwear and/or orthotics, podiatry care (including callus debridement), revascularization, foot care and hygiene, and foot screening exams (if results lead to appropriate specialist referral).

When an ulcer is present, care should include proper assessment and documentation of the wound, appropriate referrals, investigation for infection, vascular assessment and the use of offloading devices. One such check, the Fresenius Monthly Foot Check, requires the following:



Lisa Dubrofsky, MDCM FRCPC

Dr. Lisa Dubrofsky is a nephrologist currently working as a clinical associate at Sunnybrook Health Sciences Centre. She is completing a master's degree in quality improvement and patient safety. Working with hemodialysis patients in the clinical setting, she has noted a great degree of morbidity and mortality related to diabetic and vascular foot ulcers. Her research is focused on improving the foot care processes in the hemodialysis unit.



- Assess the patient's shoes and socks.
- Check colour, temperature and skin integrity.
- Check pedal pulses.
- Test using monofilament.
- Refer patient to orthopedics for shoes, if necessary.
- Schedule monthly patient education.
- Refer to first available appointment with wound care clinic if new wound is present.

Patients with ESRD have complex medical issues and competing priorities. While these patients receive good care overall, nephrologists often do not have the knowledge or skills to manage DFUs or other wounds. In the presence of severe vascular disease, typical therapies might not be an option for this population. The lack of infrastructure in many care centres to manage complex wounds in a multidisciplinary fashion is also a barrier to effective care.

One of the keys to overcoming barriers is understanding the current care process and making changes to improve patient care through comprehensive foot exams for all patients. Clear algorithms for care should be put in place for nephrologists and nurse practitioners for new ulcers, chronic wounds and foot care. Finally, rapid access to wound care clinics with chiropodists, wound care specialists and vascular surgeons is essential for optimal care outcomes.

Key Presentation Points

- DFUs and amputations have significant morbidity and mortality in patients with end-stage renal disease.
- The management is complex in an already health-care-intensive population.
- Putting systems in place to help manage these patients should be a priority.

People with Diabetes and Heel Ulcers: Treatment Challenges

Christine Murphy, PhD RN WCCC(C)

Diabetic Heel Ulcers

Clinicians need to define ulcers not just based on type (e.g., diabetic foot ulcers [DFUs]), but also on other factors such as location and depth. Patients with diabetes, arterial disease and heel ulcers present a critical health-care problem. Some 10 to 18% of hospitalized patients have heel ulcers, and these patients are 1.5 times more expensive than those without diabetes and 2.5 times less likely to heal than those without diabetes. It is critical to include a nurse with wound credentials on any wound care team, and to take an action-oriented approach to treatment (see Table 7).

Key Takeaway Points

- Wound sub-categories influence healing time.
- Active therapies support limb preservation.
- Involve specialists early in care.
- Update *chronic* wound to *urgent* wound.



Christine Murphy, PhD RN WCCC(C)

Dr. Christine Murphy is a nurse specialist in complex vascular wounds who has worked with her team to develop a multi-professional limb preservation clinic. She has been a nurse for over 30 years and completed a degree in tissue viability, Master of Clinical Science in wound healing, and a PhD investigating healing challenges in a vascular population. Her research included a randomized controlled trial on ultrasound debridement in the vascular population. Dr. Murphy is president of Nurses Specialized in Wound, Ostomy and Continence Canada (NSWCCC) and co-chair of the Registered Nurses' Association of Ontario's ostomy guideline update. She is a core faculty member of the Western University MCISC (Wound Healing) program.



Tracking Progress

Clinicians need to aim for an endpoint when working with this population of patients. Often this endpoint is an improvement in the patient's Wifl score.

Supporting People with Non-Healing or Non-Healable Wounds

Maryse Beaumier, MSc Inf PhD

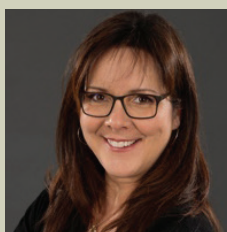
Though there are best practices for each type of wound, some recommendations are common to all. These include determining if arterial blood supply to the wound is sufficient for healing before deciding on the treatment plan, especially for ulcers on the leg or foot, and assessing the amount of blood reaching the wound, since more oxygen to the wound equals less risk of the wound becoming infected (see Table 8). If, through comprehensive assessment, a wound is deemed unhealable, what is the best way to support the patient? Best

Table 7: Action-oriented Treatment Approaches

Issue	Treatment Approach
Poorly perfused area	Revascularization, negative pressure wound therapy (NPWT), hyperbaric oxygen therapy, topical oxygen therapy
Necrosis	Debridement/resection
Exposed bone/poor tissue quality	Biologicals, calcium sulfate
Infection	Antibiotics/beads, NPWT

Maryse Beaumier, MSc Inf PhD

Maryse Beaumier is a professor of nursing at the University of Quebec at Trois-Rivières (UQTR) and has been a nurse since 1988. She completed her Bachelor of Nursing Science at the University of Montreal and her Master's in Nursing Science at UQTR. She completed a PhD in biomedical sciences at the University of Montreal after almost completing a PhD in community health at Laval University (2010–2015) (doctoral exams completed with success). Involved in the development of wound care for almost 20 years, she was a member of the board of the Canadian Association of Wound Care (now Wounds Canada) from 2009 to 2012, a member of the editorial board of *Wound Care Canada* since 2011, government adviser at the Regroupement Québécois du soins des plaies from 2012 to 2015 and now a member of the Groupe international de la francophonie en soins des plaies de la Société française et francophone de plaies et cicatrisations (SFFPC). She is also a researcher for the Réseau de recherche en interventions en sciences infirmières du Québec (RRISIQ).

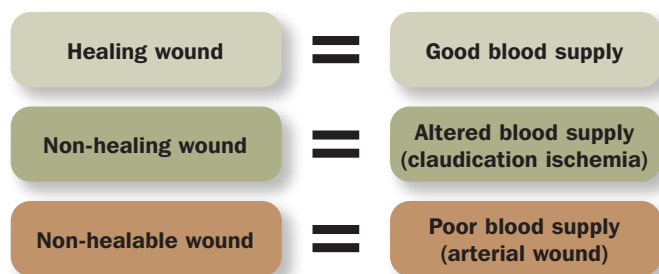


Dressings

As long ago as the 1960s, George D. Winter found that wounds with poor blood supply were predisposed to developing an infection. Most guidelines suggest a conservative dressing or appropriate treatment as soon as possible. Dressings that promote a dry wound environment and include anti-septics are preferred. Dressings should be used to limit bacterial overgrowth in the wound.

clinical decisions are made through a combination of individual clinical experience, use of best practice recommendations, interdisciplinary teamwork and careful attention to the patient's values and expectations.

Figure 3: Blood Flow Status by Wound Type



“The best clinical decisions are made through a combination of individual clinical experience, use of best practice recommendations, interdisciplinary teamwork and careful attention to the patient's values and expectations.”

—Maryse Beaumier

Table 8: Non-invasive Instruments to Measure Blood Supply

Instrument	Features	Limits
ABPI and macrocirculation	<ul style="list-style-type: none">• Fast and inexpensive• Enables clinician to hear waveforms	<ul style="list-style-type: none">• Dopplers are rarely accessible.• Techniques and methods are not harmonized.• 19% of results are false positives in the diabetic population (Hembling, 2007)
TPI and macrocirculation	<ul style="list-style-type: none">• Better than the above for diabetic patients, because the artery of the big toe has less calcification	<ul style="list-style-type: none">• The big toe is often amputated.• Not performed often• Dopplers are rarely accessible.
TcPO ₂ and microcirculation	<ul style="list-style-type: none">• Only used in vascular laboratories	<ul style="list-style-type: none">• Requires medical expertise• Not very accessible (e.g., only three available in Quebec)

Clinical Decision for the Best Dressing

If the blood supply to the wound is sufficient, clinicians should consider moist wound care without antiseptics to promote wound healing. If the blood supply to the wound is insufficient, clinicians should consider dry wound care with antiseptics to prevent infection. A dry dressing with antiseptics on a non-healable wound is part of a treatment plan that fights infection, improves patient quality of life and is less expensive for the patient and the health-care system.

Overcoming Barriers

Continued research is needed in this area, and the findings of this research must be incorporated into practice, policy and education. Interdisciplinary health-care providers should be educated about current wound care practices and raise awareness of wound care among all health-care providers, organizations and governments.

Key Presentation Points

- Evaluate blood supply to the wound.
- All health-care providers must be aware that 50% of patients with PAD are asymptomatic.
- Clinical decisions should be made with the objective of limiting infections.
- If there is not sufficient blood supply, a moist wound environment can result in amputation.

What Do We Need to Succeed?

Session Summary

This session explored current and future technologies and strategies to prevent and treat diabetic foot complications and peripheral arterial disease. Speakers described select local, provincial/territorial and national preventative strategies and initiatives related to diabetic foot complications and peripheral arterial disease.

Leveraging Technology: Wound Databases, Apps and Research Directions

Bijan Najafi

See Dr. Najafi's bio, page 41

Smart technologies to better manage diabetic foot ulcers are a large industry, but a major mistake in this area of innovation is looking for a great idea instead of a worthwhile problem to solve.

One of the major obstacles in DFU prevention is poor patient adherence to offloading. This lack of adherence is also one of the main causes of failure in wound management.

New Technologies to Monitor Offloading

The orthotimer sensor is a small tag integrated into any offloading device that can actively measure adherence, but this is not enough. Patients must be actively reinforced for adhering to offloading.

Smart sensors are new devices that measure offloading wear. They notify the patient immediately if they begin to walk without the device and give virtual badges for reaching individualized goals.

Smart shoe insoles cue offloading and prevent sustained high plantar pressure. These insoles were found to increase average wear time by eight hours when patients received repetitive alerts.

Other Technologies for Diabetic Foot Care

High-risk patients can be effectively triaged using floor mats that measure plantar temperature.



According to a 2017 study published in *Diabetes Care*, using this technology there is a 37 ± 18 -day lead time in predicting ulceration with an accuracy of 97%.

Wearable technologies and smart gadgets can empower patients and caregivers to be active members of the care team. These technologies include smart socks that measure temperature or pressure and smart insoles that monitor gait.

Biosensors being developed for use on wound dressings would act as flexible electrochemical sensors to monitor pH and glucose levels. Similarly, flexible sensors placed beneath dressings can provide remote, real-time monitoring of moisture, pressure and temperature.

A portable oxygen generator that delivers a continuous supply of oxygen to the wound bed is also available.

Future Directions

Researchers are exploring the use of voice-enabled speakers to manage diabetic foot ulcers. About 40 to 60% of adults in the United States already use voice search in their everyday lives, and it is estimated that 50% of all queries will be voice searches by 2020. Researchers are also looking into the possibility of using a voice-assistant application to facilitate capturing high-quality photos of plantar wounds. For more information, visit www.bcm.edu/icamp.

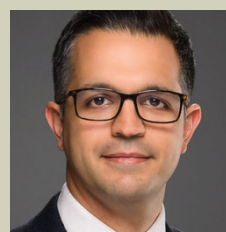
Prevention of Diabetic Complications: Local, Provincial/Territorial and National Initiatives

Ahmed Kayssi, MD MSc MPH FRCSC

This symposium has welcomed more than 100 delegates, and attendees from as far as Thunder Bay, Ontario, and Yellowknife, Northwest Territories. Though no one thought the problems of diabetic foot ulcers and amputation would be solved in a one-day symposium, we are encouraged to have a room full of people interested and willing to stay late on a Friday evening to create a network of collaboration.

We need to keep up the momentum on common themes such as data collection and measurement,

Ahmed Kayssi, MD MSc MPH FRCSC



Dr. Ahmed Kayssi is a vascular surgeon at Sunnybrook Health Sciences Centre and a wound care physician at Women's College Hospital. He obtained his medical degree from Queen's University in Kingston, Ontario, before relocating to Toronto to pursue training in general and vascular surgery. He subsequently completed a fellowship in limb preservation and wound care under the supervision of Dr. Richard Neville in Fairfax, Virginia. Dr. Kayssi is a graduate of the Harvard School of Public Health, where he obtained a Master of Public Health focusing on quantitative methods and is currently pursuing a Doctor of Public Health in Health Policy and Management from the Johns Hopkins School of Public Health under the supervision of Dr. Ellen MacKenzie.

education, advocacy, public policy, leveraging technology, collaboration and protocol development in prevention and active disease. In future meetings, we will include other specialists to be even more inclusive and multidisciplinary.

The next step for this group is applying for grants to continue work on these issues and to move the agenda forward.

Topics for Future Events

The symposium covered a wide range of topics, but not everything could be covered in one day. A number of suggestions came up in the evaluations regarding topics attendees would like to know more about. They include:

- Care of the diabetic foot in primary care and how to prevent the need for intensive management by being proactive, earlier.
- How to access specialists when the wait times are long and unpredictable
- Practical demonstrations
- An approach to diabetic wounds, with more step-by-step instructions.
- Which wounds need a referral from family practice to a specialist
- How to diagnose Charcot neuropathic arthropathy
- A discussion with an orthopedic surgeon, a vascular surgeon and an advanced practice wound care nurse on their perspectives on the management of critical limb ischemia
- Indigenous perspectives in diabetic foot care
- A focus on tertiary care with an emphasis on vascular and podiatric surgery

Saving Limbs and Decreasing SSIs: A Vascular Perspective

This is a brief summary of a presentation from the Spring 2019 Symposium: New Perspectives in Diabetic Limb Preservation, held in Toronto, Ontario, on May 31, 2019, with financial support from Smith & Nephew. The speaker was Dr. Gustavo Azoubel, vascular and endovascular surgeon, Scarborough Health Network, and lecturer at the University of Toronto. The presentation provided a vascular surgeon's perspective on the importance of preventing surgical site infections in high-risk patients, thereby supporting limb preservation.



Surgical Site Infections: Consequences and Impact

There are higher rates of surgical site infections (SSIs) in vascular surgery than in any other surgical specialities due to the increased prevalence of older patients, diabetes, end-stage renal disease, smoking, obesity, emergency cases, prosthetic vascular grafts, immunosuppression and poor nutrition. SSIs can have grave consequences on patients, including limb loss. As a result, preventing SSIs to minimize serious consequences is a constant concern in vascular surgery. Approximately 19% of morbidities in peripheral vascular surgery are attributed to wound complications, which can result in delayed healing. Arterial or graft infections can lead to limb loss and even mortality in extreme cases.

Along with the physical and emotional impact, the socio-economic burden of SSIs is also staggering:

- Length of hospital stay increased by 7–12 days at an additional cost of \$38,656¹
- Average cost of treatment increased by \$25,000 and up to \$200,000 in some cases²
- Hospital re-admissions increased
- Patient satisfaction and quality of life (QoL) decreased

Negative Pressure Wound Therapy

To minimize SSIs, clinicians should consider advanced healing therapies such as negative pressure wound therapy (NPWT) for surgically closed incision sites. While standard dressings work to provide a barrier to external infection and help ab-

sorb exudate,³ NPWT has multiple mechanisms of action and can help:

- improve wound contraction^{4–8}
- promote changes in blood flow (perfusion)⁴
- increase lymphatic clearance⁷
- reduce/absorb edema^{8–9}
- promote evaporation of exudate⁴
- stimulate growth of new blood vessels (angiogenesis)^{4, 10}

PICO: A Single Use Negative Pressure Wound Therapy

Launched in 2011, PICO, a single use negative pressure wound therapy (sNPWT) system, is canister-free and provides 80 mmHg to a sealed wound for seven days of treatment. PICO's sealed system soft port dressing is designed to prevent fluid ingress into soft port tubing and into the pump. Evidence has demonstrated its efficaciousness in minimizing various surgical site complications, including SSIs.

Each dressing has four layers:

- a silicone adhesive wound contact layer to minimize pain and damage
- a proprietary AIRLOCK layer for even distribution of pressure
- an absorbent layer to lock exudate away from wound
- a top film layer, which has a high moisture vapour transmission rate and protects the wounds from contamination

Reviewing the Evidence

A meta-analysis of randomized controlled trials (RCTs) and observational studies by Strugala et al. (2017), had the following findings:¹¹

continued . . .

- In RCT studies: Application of PICO reduced the rate of SSI by 51% (9.7% to 4.8%) compared with standard of care
- In observational studies: SSI rate was 7.4% in PICO group and 22.5% in control
- Significant mean reduction in hospital length of stay for those treated with NPWT

A 2018 study by Fleming and colleagues found that the routine use of PICO dressings is associated with reduction in wound complication rates following peripheral vascular surgery and is cost-effective.¹²

NICE Review

The National Institute for Health and Care Excellence (NICE) in the UK reviewed evidence from 31 studies and determined that, in both RCTs and observational studies, evidence shows fewer SSIs when high-risk patients were treated prophylactically with PICO dressings than with standard wound dressings. In addition, personal experiences from users of PICO have shown positive clinical and economic outcomes in both closed incisional and open wounds, thereby preserving limb integrity.¹³

As a result, NICE published the following recommendations:¹³

- Evidence supports the case for adopting PICO sNPWT for closed surgical incisions in the NHS, as it is associated with fewer surgical site infections and seromas than standard dressings.
- PICO sNPWT should be considered prophylactically as an option for closed surgical incisions in people who are at high risk of developing SSIs.
- PICO sNPWT provides extra clinical benefits at a similar overall cost compared with standard wound dressings.

Summary

PICO is the sNPWT technology of choice due to ease of use, affordability and effectiveness in dealing with both closed and open wounds due to reduction in SSIs, thereby preserving limb integrity.

References

1. Kirkland KB, Briggs JP, Trivette SL, Wilkinson WE, Sexton DJ. The impact of surgical-site infections in the 1990s: Attributable mortality, excess length of hospitalization, and extra costs. *Infect Control Hosp Epidemiol*. 1999;20(11):725–730.
2. Pennsylvania Health Care Cost Containment Council. Pennsylvania's Guide to Coronary Artery Bypass Graft Surgery 2004. The Organization; 2004. Retrieved from: www.phc4.org/reports/cabg/04/.
3. Wounds International. Closed Surgical Incision Management: Understanding the Role of NPWT. World Union of Wound Healing Societies consensus document. 2016. Retrieved from: www.woundsinternational.com/resources/details/closed-surgical-incision-managementunderstanding-the-role-of-npwt.
4. Malmjö M, Huddleston E, Martin R. Biological effects of a disposable, canisterless negative pressure wound therapy system. *Eplasty*. 2014;14:e15.
5. Loveluck J, Copeland T, Hill J, Hunt A, Martin R. Biomechanical modelling of the forces applied to closed incisions during single-use negative pressure wound therapy. *Eplasty*. 2016;16:e20.
6. Lalezari S, Lee CJ, Borovikova AA, Banyard DA, Paydar KZ, Wirth GA, et al. Deconstructing negative pressure wound therapy. *Int Wound J*. 2017;14(4):649–657.
7. Kilpadi DV, Cunningham MR. Evaluation of closed incision management with negative pressure wound therapy (CIM): Gematoma/seroma and involvement of the lymphatic system. *Wound Repair Regen*. 2011;19(5):588–596.
8. Canonico S, Campitiello F, Della Corte A, Padovano V, Giannini S, Luciani D, et al. Therapeutic possibilities of portable NPWT. Initial multidisciplinary observation with the negative pressure therapy device. *Acta Vulnologica*. 2012;10(2):57–66.
9. Karlakki S, Brem M, Giannini S, Khanduja V, Stannard J, Martin R. Negative pressure wound therapy for management of the surgical incision in orthopaedic surgery: A review of evidence and mechanisms for an emerging indication. *Bone Joint Res*. 2013;2(12):276–284.
10. Glaser DA, Farnsworth CL, Varley ES, Nunn TA, Sayad-Shah M, Breisch E, et al. Negative pressure therapy for closed spine incisions: A pilot study. *Wounds*. 2012;24(11):308–316.
11. Strugala V, Martin R. Meta-analysis of comparative trials evaluating a prophylactic single-use negative pressure wound therapy system for the prevention of surgical site complications. *Surg Infect (Larchmt)*. 2017;18(7):810–819.
12. Fleming CA, Kuteva M, O'Hanlon K, O'Brien G, McGreal G. Routine use of PICO dressings may reduce overall groin wound complication rates following peripheral vascular surgery. *J Hosp Infect*. 2018;99(1):75–80.
13. National Institute for Health and Care Excellence (NICE). PICO Negative Pressure Wound Dressings for Closed Surgical Incisions. NICE; 2019. Retrieved from: www.nice.org.uk/guidance/mtg43/resources/pico-negative-pressure-wound-dressings-for-closed-surgical-incisions-pdf-64372054098373.

Presentation Digest is a production of Wounds Canada (www.woundscanada.ca). The views expressed in this report are those of the presenters and do not necessarily reflect those of Wounds Canada, which has neither reviewed nor endorsed this report.

© 2019 Canadian Association of Wound Care.

All rights reserved.

Increased blood flow
generates a
natural healing response

gekoTM
wound therapy

Wound Therapy

Providing increased blood circulation to promote
wound healing naturally from the inside



The gekoTM Wound Therapy device **stimulates** the common peroneal nerve **activating** the calf and foot muscle pumps, increasing venous, arterial and microcirculatory blood flow.^{1, 2, 3}

The blood flow increase prevents and reduces edema⁴ and maintains TCpO₂ – promoting conditions favorable for wound healing.^{3, 5}

For further information on the gekoTM Wound Therapy device and the clinical evidence, please visit our website: www.gekowound.ca

Demonstrations / Ordering:

T: +1 888 244 5579

Email: orders@perfusemedtec.com

1. Tucker AT et al. Int J Angiol. 2010 Spring;19 (1): e31-e37
2. Williams KJ et al. Phlebology. 2015 Jun; 30 (5): 365-72
3. Jawad H et al. 2014 Journal Vasc Surg. Vol 2: 160-65
4. Williams KJ et al. Poster. Vascular Society Annual Scientific Meeting, Glasgow November 2014
5. Warwick D et al. Int J Angiol. 2015 April; 34 (2): 158-65

Perfuse
Medtec

Resources

Wounds Canada is your partner in limb preservation. Here is a list of resources that can support you in clinical practice.

Wounds Canada Resources

Best Practice Recommendations Related to the Diabetic Foot:

Orsted HL, Keast DH, Forest-Lalande L, Kuhnke JL, O'Sullivan-Drombolis D, Jin S, et al. Best practice recommendations for the prevention and management of wounds. In: Foundations of Best Practice for Skin and Wound Management. A supplement of Wound

Care Canada. 2017. Available from: www.woundscanada.ca/docman/public/health-care-professional/bpr-workshop/165-wc-bpr-prevention-and-management-of-wounds/file.

Botros M, Kuhnke J, Embil J, Goettl K, Morin C, Parsons L, et al. Best practice recommendations for the prevention and management of diabetic foot ulcers. In: Foundations of Best Practice for Skin and Wound Management. A supplement of Wound Care Canada. 2017. Available from: www.woundscanada.ca/docman/public/health-care-professional/bpr-workshop/895-wc-bpr-prevention-and-management-of-diabetic-foot-ulcers-1573r1e-final/file.

View the complete collection [here](#).

Tools

Inlow's 60-Second Diabetic Foot Screen: www.woundscanada.ca/docman/public/health-care-professional/162-60-second-foot-screen-2011/file.

Additional BPR Resources: www.woundscanada.ca/health-care-professional/resources-health-care-pros/wcc-magazine/28-publications/wound-care-canada/200-library-2.

Pathway for Preventing and Managing Diabetic Foot Complications: see page 57.

Wound Care Canada Articles:

Botros M, Kuhnke JL, Dunbar P, Smith CA. Preventing amputation in cases of diabetic distress: A case study. Wound Care Canada. 2019;17(2):23–26. Available from: www.woundscanada.ca/docman/public/wound-care-canada-magazine/2019-vol-17-no-2/1475-diabetes-case-study/file.



Evans R, Botros M. Charcot foot: An Overview. Wound Care Canada. 2019;17(1):42–46. Available from: www.woundscanada.ca/docman/public/wound-care-canada-magazine/wcc-2019-v17-no1/1409-wcc-spring-2019-v17n1-final-p-42-48-charcot-foot-pdf/file.

Orsted HL, Botros M. Inlow's 60-Second Diabetic Foot Screen gets a new look! Wound Care Canada. 2018;16(1):26–28. Available from: www.woundscanada.ca/docman/public/wound-care-canada-magazine/2018-16-no1/1266-wcc-summer-2018-v16n1-final-p-26-29-inlow-tool/file.

Botros M, Grinspun D, Thambirajah A, Harley C, Rosenthal S. A journey of a thousand steps to #ActAgainst amputation. Wound Care Canada. 2017;15(3):12–14. Available from: www.woundscanada.ca/docman/public/wound-care-canada-magazine/2017-vol15-no3/1012-wcc-winter-2017-v15n3-final-p-12-17-thousand-steps/file.

Kuhnke JL, Meyer RS. Patient perspective: Empowerment, and living with a diabetic foot ulcer. Wound Care Canada. 2017;15(3):38–40. Available from: www.woundscanada.ca/docman/public/wound-care-canada-magazine/2017-vol15-no3/1025-wcc-winter-2017-v15n3-final-p-38-41-patient-perspective/file.

Botros M, Kuhnke JL, Jahnke D. The diabetic foot triad as a catalyst for behaviour change. Wound Care Canada. 2017;15(2):16–22. Available from: www.woundscanada.ca/docman/public/wound-care-canada-magazine/2017-vol15-no2/919-wcc-fall-2017-v15n2-final-p-16-23-dft/file.

Woodbury MG. Foot complications: Risking limbs, wasting money. Wound Care Canada. 2016;14(3):8–14. Available from: www.woundscanada.ca/docman/public/wound-care-canada-magazine/2016-14-no3/122-foot-complications-risking-limbs-wasting-money/file.

Working for change: The CAWC's advocacy campaign for the prevention of diabetic foot complications. Wound Care Canada. 2016;14(1):15–19. Available from: www.woundscanada.ca/docman/public/wound-care-canada-magazine/2016-14-no1/89-working-for-change-the-cawc-s-advocacy-campaign-for-the-prevention-of-diabetic-foot-complications/file.

Alavi A, Archibald G, Botros M, Brassard A, Coutts PA, Cross K, et al. An Overview of Advanced Therapies in the Management of Diabetic Neuropathic Foot Ulcers. A Supplement of Wound Care Canada and Diabetic Foot Canada. 2015. Available from: www.woundscanada.ca/docman/public/69-bpr-dfu-advanced-healing-supplement-final-320e/file.

Kuhnke JL, Peersada S, Farrell K, MacDonald K. Perspectives from a peer leader and regional self-management program leaders: PEP Talk: Diabetes, Healthy Feet and You in action. Wound Care Canada. 2015;13(1):12–16. Available from: www.woundscanada.ca/docman/public/wound-care-canada-magazine/2015-vol-13-no-1/535-wcc-spring-2015-v13n1-pep-talk/file.

Springer A. Diabetes and the importance of HCPs. Wound Care Canada. 2014;12(2):32. Available from: <https://www.woundscanada.ca/docman/public/wound-care-canada-magazine/2014-vol-12-no-2/517-wcc-summer-2014-v12n2-diabetes/file>.

Botros M, Kuhnke J, Evans R, Fusek B. Workshop aims to reduce amputation rates in northern Ontario. Wound Care Canada. 2014;12(1):12–13. Available from: www.woundscanada.ca/docman/public/wound-care-canada-magazine/2014-vol-12-no-1/508-wcc-spring-2014-v12n1-reduce-amputation-rates/file.

View the complete archive [here](#).

Diabetic Foot Canada e-Journal Articles:

Baker N, Osman IS. The principles and practicalities of offloading diabetic foot ulcers. Diabetic Foot Canada. 2017;5(1):28–34. Available from: www.diabeticfootcanadajournal.ca/download/content/5031.

Costa IG. Investing in prevention: Funding foot care specialists and offloading devices. Diabetic Foot Canada. 2016;4(1):12–14. Available from: www.diabeticfootcanadajournal.ca/download/content/4583.

Kuhnke JL, Grinspun D, Elliot J, Archibald G, Botros M. A call to action: Reducing foot problems in people with diabetes. Diabetic Foot Canada. 2015;3(2):15–19. Available from: www.diabeticfootcanadajournal.ca/download/content/4232.

View the complete archive [here](#).

Other Resources

Canadian Diabetes Association 2018 Clinical Practice Guidelines for the Prevention and Management of Diabetes in Canada: <http://guidelines.diabetes.ca/cpg>.

2012 Infectious Diseases Society of America Clinical Practice Guideline for the Diagnosis and Treatment of Diabetic Foot Infections: <http://content.guidelinecentral.com/guideline/get/pdf/3752>.

A Quick Reference Guide for Lower-extremity Wounds: Venous, Arterial and Neuropathic: http://c.ym-cdn.com/sites/www.wocn.org/resource/resmgr/Publications/A_Quick_Reference_Guide_for_.pdfn.

International Working Group on the Diabetic Foot: www.d-foot.org/d-foot/.

The Management of Diabetic Foot: A Clinical Practice Guideline by the Society for Vascular Surgery in Collaboration with the American Podiatric Medical Association and the Society for Vascular Medicine: [www.jvascsurg.org/article/S0741-5214\(15\)02025-X/abstract](http://www.jvascsurg.org/article/S0741-5214(15)02025-X/abstract).

NICE Guidelines — Diabetic foot problems: Prevention and Management: www.nice.org.uk/guidance/ng19.

Registered Nurses' Association of Ontario: Assessment and Management of Foot Ulcers for People with Diabetes, Second Edition: <http://rnao.ca/bpg/guidelines/assessment-and-management-foot-ulcers-people-diabetes-second-edition>.

Wounds International Best Practice Recommendations: www.woundsinternational.com/media/best-practices/_/673/files/dfubestpracticeforweb.pdf.

Go to www.woundscanada.ca to access the many resources available for free!

Podiatrists: Your Partners in Health Care

An estimated 11 million Canadians currently live with diabetes or prediabetes.

According to the Canadian Diabetes Association, it is “the leading cause of non-traumatic lower limb amputation in Canadian adults, accounting for approximately 70% of amputations performed in hospital.”



"Compared to the general population, Canadian adults with diabetes are over 20 times more likely to undergo non-traumatic lower limb amputations, 85% of which are preceded by a foot ulcer."

Canadian Diabetes Association
<https://www.diabetes.ca/advocacy---policies/our-policy-positions/amputation-prevention>



"After an amputation, the chance of another amputation within three to five years is as high as 50 percent. Following a major amputation in diabetes, only around half of patients survive for more than two years."

College of Podiatry (U.K.)
<https://cop.org.uk/news/our-response-to-public-health-england-figures-on-lower-limb-amputation/>



"Five-year survival rates following lower limb amputation are lower than for breast cancer and prostate cancer. Following a major amputation in diabetes, only around half of patients survive for more than two years."

American Podiatric Medical Association
<https://www.apma.org/Patients/FootHealth.cfm?ItemNumber=980>

An interprofessional team approach to diabetic care is the only way to reduce the human and fiscal toll of diabetes. Treating diabetes is expected to cost Canadians almost \$30 billion this year, and result in thousands of lost limbs.

Podiatrists bring a wide range of competencies to foot care as the professionals with the widest scope of practice, providing a full range of foot care and surgery on and below the surface of the foot and ankle. We can assess, diagnose, and treat foot ailments, and you can find podiatrists operating at both primary care and surgical levels.

Podiatrists are a cornerstone in the interprofessional team approach to limb preservation across Canada.

Visit www.podiatrycanada.org/partners-in-health-care/ for more information and to find a partner in diabetic limb preservation.



"The facts tell the story. The costs tell part of the impact of diabetes. The loss of limbs and life captures the horrendous human price paid by those living with diabetes, but what's missing is the tragedy of not including trained podiatrists to perform to their full scope of practice to play a much-needed frontline role in the prevention of diabetic limb loss."

James Hill, D.P.M., President of the CPMA.



SWIFT SKIN AND WOUND™ 

ADVANCING

WOUND CARE

MANAGEMENT



www.swiftmedical.com

Wounds Canada Develops Infographic to Increase Awareness of Diabetic Foot Complications

The Burden of Diabetic Foot Complications

Foot complications, such as ulcers and amputations, are leading causes of morbidity in patients with diabetes mellitus. The lifetime risk of developing a foot ulcer for diabetic patients may be as high as 25%, but this statistic could be drastically lowered through simple preventative measures. Most severe foot ulcers are caused by minor trauma that is left untreated, and these can often lead to amputation. Foot injuries can be easily identified at early stages with proper surveillance—before they become potentially catastrophic health problems. Unfortunately, early identification and intervention are not nearly as prevalent in Canada as they should be, resulting in an unacceptable rate of serious ulceration and amputation across the country.

There are currently three major challenges with diabetic foot complications:

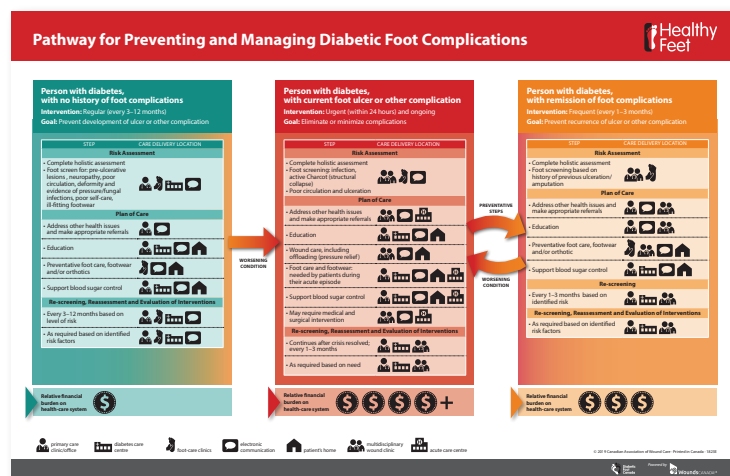
- Patients with diabetes lack the awareness and education to recognize the importance of daily foot inspections that identify foot

changes and minor trauma, and then to act on the knowledge by contacting an appropriate health-care professional.

- Minor foot injuries or changes in persons with diabetes are not viewed as serious enough to cause alarm among health-care professionals. This is due to lack of awareness, as well as lack of funding and policies to support preventative interventions at early stages. As a result, patients don't get the treatment they need in time to avoid the serious consequences that often accompany untreated or poorly treated foot trauma.
- Canadian health-care systems are generally not set up to support prevention activities, meaning minor problems become major problems before any health-care interventions take place. In the area of diabetic foot care, policy makers

lack knowledge not only of how early interventions can save limbs and lives, but also of the significant cost-savings associated with early intervention and prevention.

Fortunately, there are solutions. Many hospitalizations, amputations and



deaths could be prevented if patients with diabetes and health-care professionals learn to recognize how easily diabetic foot injuries can spiral out of control and lead to ulceration and amputation, and then act on that knowledge, and if health systems implement policies and provide appropriate funding to support their activities. In addition, the provinces and territories would save millions in direct and indirect costs.

Diabetic Foot Canada Task Force

To address this deficit in awareness, knowledge and funding, a group of interested stakeholders formed the Diabetic Foot Canada Task Force. The task force comprises representatives from national diabetes-, wound-care- and foot-care-related associations; regional wound care clinicians with multidisciplinary backgrounds; and patients. The group has met to discuss the topic of diabetic foot complications, including the scope of the problem and solutions to the highest priority challenges. This unique collaboration unites professionals and patients from across the country with one common goal: to reduce diabetes-related foot complications, preventable amputations and loss of life for people living with diabetes in Canada.

Development of the Diabetic Foot Enabler

The Diabetic Foot Canada Task Force identified multiple barriers to the implementation of effective diabetic foot care across Canada and agreed to develop an infographic representing a pathway for managing diabetic foot complications. The intention was for the infographic to outline the most important aspects of care—which are often overlooked—and present them in a way that is understandable to all members of Canadian society, whether or not they have a health-care background. Upon completion of the pathway infographic, all organizations and individuals with an interest in this area, including those who were not members of the task force, would be free to use the document to engage in discussions with policy

makers, politicians, clinicians, health-care administrators, patients and the public.

The task force developed a draft infographic with input from the supporting organizations, clinical experts and patients living with diabetes. The completed document was then reviewed by a separate group of experts, Wounds Canada's National Strategy Committee members, who represent all areas of Canada and include patients, clinicians from a range of disciplines, researchers and communications specialists. In all, some 38 individuals provided initial input and review. The result is an easy-to-read infographic (see following pages) that highlights the key components for the prevention and management of foot complications for all Canadians diagnosed with diabetes.

Contributors to the Infographic

Diabetic Foot Canada Task Force

Joel Alleyne
Mariam Botros
Charles de Mestral
Robyn Evans
Doris Grinspun
James Hill
Susie Jin
Ahmed Kayssi
Janet Kuhnke
Ann-Marie McLaren
Robert Meyer
Christine Murphy
Barbie Murray
Petra O'Connell
Scott Schumacher
Peter Stavropoulos
Amanda Thambirajah
Audrey Wall
Cathy Whiteside

Wounds Canada

Katie Bassett
Robert Ketchen
Sue Rosenthal

National Strategy Committee of Wounds Canada

Joel Alleyne
Mariam Botros
Tracey Fournier
Danielle Gilbert
Shannon Handfield
Catherine Harley
Rosemary Hill
Chester Ho
Elenore Howard
John Hwang
Susie Jin
Janet Kuhnke
Kimberley LeBlanc
Chantal Lebreque
Ellen Mackay
Pam Morey
Christine Murphy
Barbie Murray
Karen Napier
Linda O'Rourke
Sue Rosenthal
Laura Teague
Valerie Winberg

Pathway for Preventing and Managing Diabetic Foot Complications



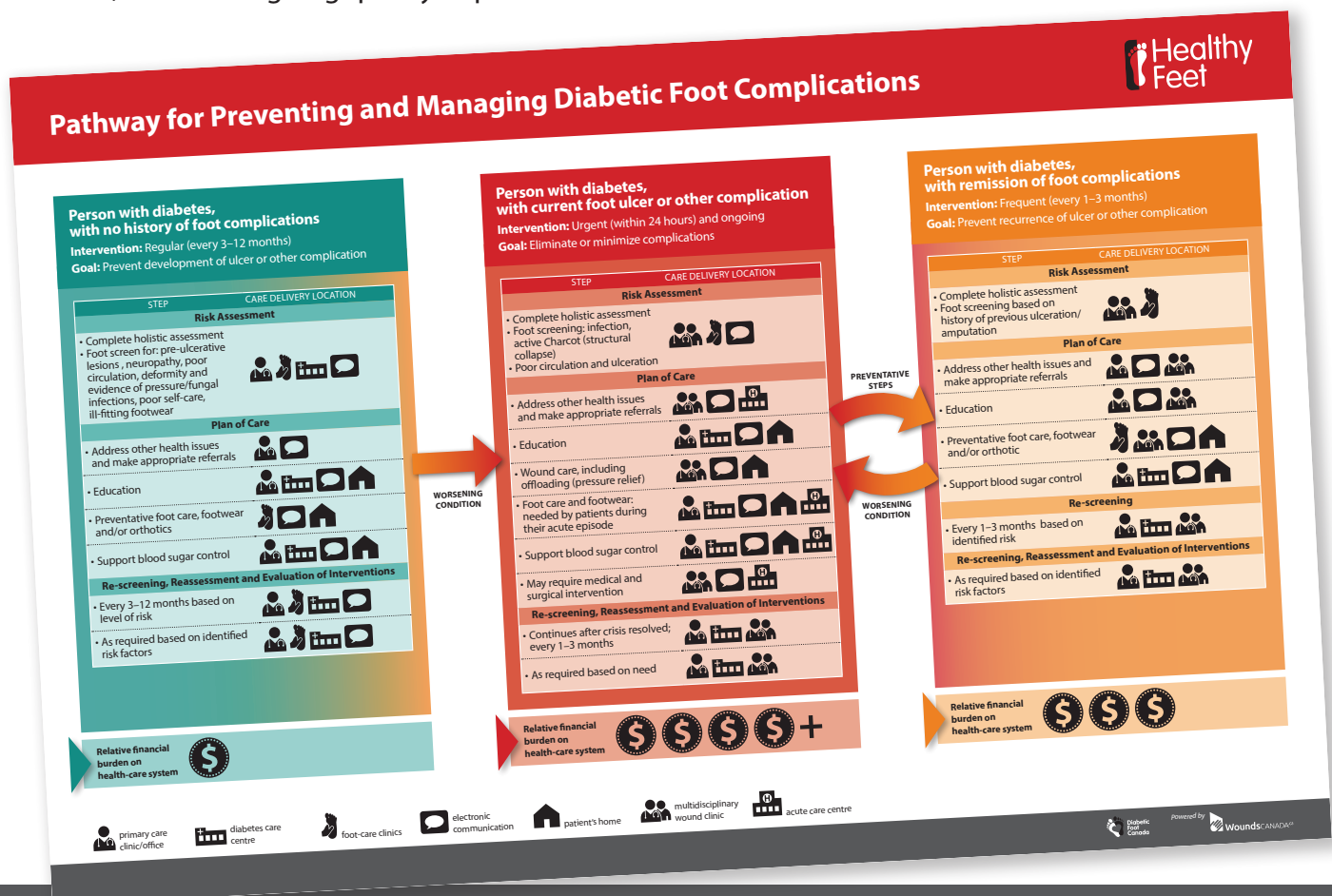
Diabetic foot wounds are serious, debilitating and are considered one of the most feared complications of diabetes. They are also the leading cause of amputations in Canada, with a five-year mortality rate as high as 50%. Recognizing that 85% of amputations can be prevented, the Canadian Diabetic Foot Task Force recommends:

All persons with diabetes receive

1. affordable and timely access to the medications, devices, education and care necessary for achieving optimal diabetes control and preventing serious complications such as amputation
2. access to publicly funded services and devices to prevent and treat foot ulcers and avoid amputation, including preventative foot care, foot care education, professionally fitted footwear and devices and timely referrals to multidisciplinary teams

All health regions/agencies

1. prevent and manage foot complications by providing a well-defined referral pattern, and by co-ordinating care and communication between health-care professionals who support people with diabetes as part of a multi-disciplinary team
2. publish, on an annual basis, reliable data on diabetes-related foot care, using internationally recognized metrics, to assist ongoing quality improvement efforts



Person with diabetes, with no history of foot complications

Intervention: Regular (every 3–12 months)

Goal: Prevent development of ulcer or other complication

STEP	CARE DELIVERY LOCATION
Risk Assessment	
<ul style="list-style-type: none"> • Complete holistic assessment • Foot screen for: pre-ulcerative lesions, neuropathy, poor circulation, deformity and evidence of pressure/fungal infections, poor self-care, ill-fitting footwear 	
Plan of Care	
<ul style="list-style-type: none"> • Address other health issues and make appropriate referrals 	
<ul style="list-style-type: none"> • Education 	
<ul style="list-style-type: none"> • Preventative foot care, footwear and/or orthotics 	
<ul style="list-style-type: none"> • Support blood sugar control 	
Re-screening, Reassessment and Evaluation of Interventions	
<ul style="list-style-type: none"> • Every 3–12 months based on level of risk 	
<ul style="list-style-type: none"> • As required based on identified risk factors 	



Person with co...

Intervention:

Goal: Elim...

<ul style="list-style-type: none"> • Complete • Foot screen • active Ch • collapse) • Poor circ 	
<ul style="list-style-type: none"> • Address c • and make 	
<ul style="list-style-type: none"> • Education 	
<ul style="list-style-type: none"> • Wound c • offloading 	
<ul style="list-style-type: none"> • Foot care • needed b • their acut 	
<ul style="list-style-type: none"> • Support b 	
<ul style="list-style-type: none"> • May requ • surgical i 	
Re-scr...	
<ul style="list-style-type: none"> • Continue • every 1–3 	
<ul style="list-style-type: none"> • As requir 	

**Relative financial
burden on
health-care system**



**Relative fina
burden on
health-care s**

Person with diabetes, with current foot ulcer or other complication

Intervention: Urgent (within 24 hours) and ongoing

Goal: Eliminate or minimize complications

STEP	CARE DELIVERY LOCATION
Risk Assessment	
<ul style="list-style-type: none"> Complete holistic assessment Foot screening: infection, active Charcot (structural collapse) Poor circulation and ulceration 	
Plan of Care	
<ul style="list-style-type: none"> Address other health issues and make appropriate referrals 	
<ul style="list-style-type: none"> Education 	
<ul style="list-style-type: none"> Wound care, including offloading (pressure relief) 	
<ul style="list-style-type: none"> Foot care and footwear: needed by patients during their acute episode 	
<ul style="list-style-type: none"> Support blood sugar control 	
<ul style="list-style-type: none"> May require medical and surgical intervention 	
Re-screening, Reassessment and Evaluation of Interventions	
<ul style="list-style-type: none"> Continues after crisis resolved; every 1–3 months 	
<ul style="list-style-type: none"> As required based on need 	

WORSENING CONDITION

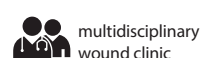
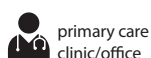
PREVENTATIVE STEPS

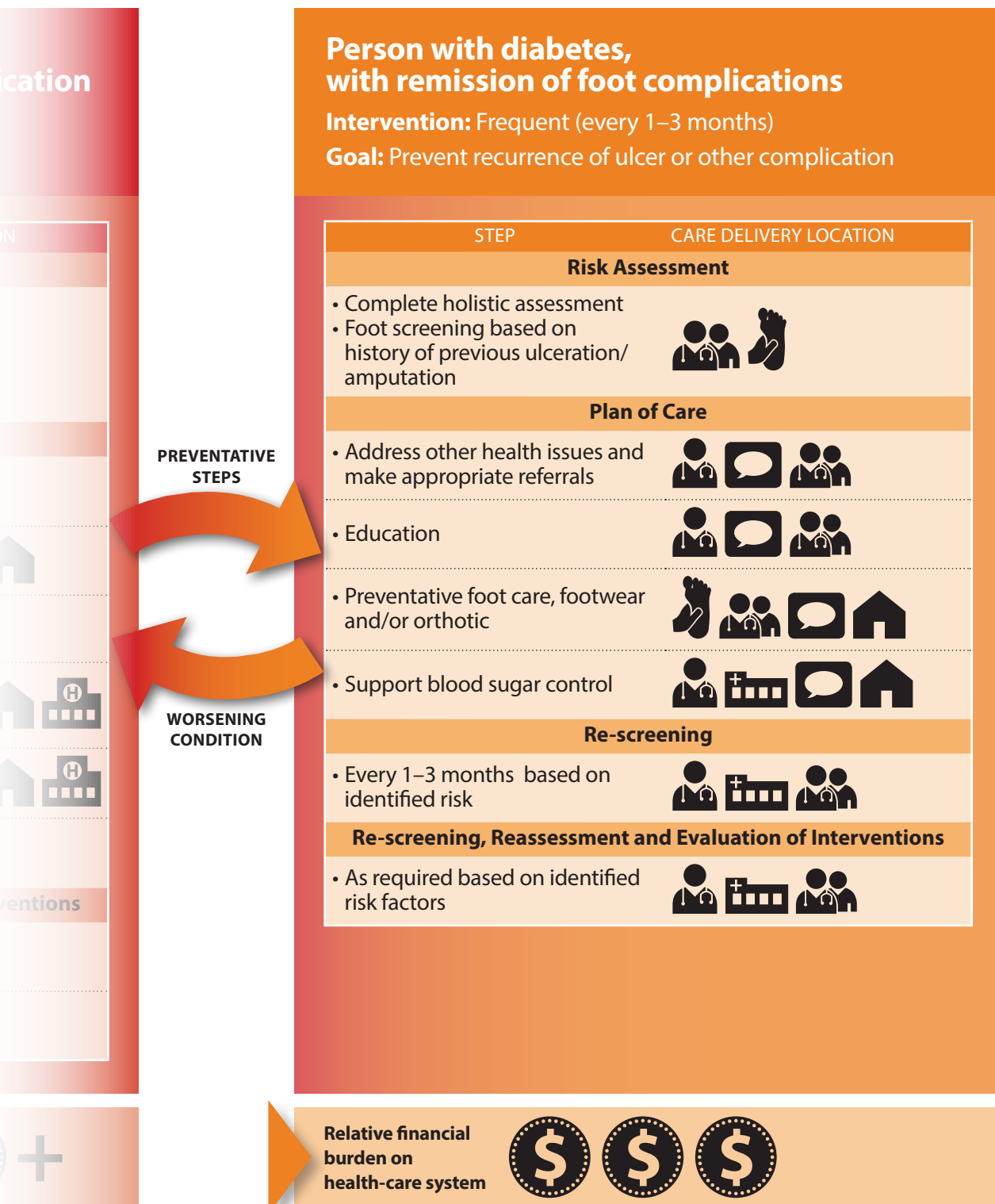
WORSENING CONDITION

Relative financial burden on health-care system



Relative financial burden on health-care system





+ Powerful results in stalled wounds

Use of **PICO® Single Use Negative Pressure Wound Therapy System** (sNPWT) reduced wound area, depth and volume compared with traditional negative pressure wound therapy (tNPWT) in patients with venous leg ulcers (VLUs) and diabetic foot ulcers (DFUs)

51% more closed wounds at 12 weeks with PICO sNPWT than with tNPWT (45 vs 22%; $p=0.002$; ITT population)¹

Smith+Nephew



References: 1. Kirsner R, et al. Randomized controlled trial on the efficacy and acceptance of a single-use negative pressure wound therapy system versus traditional negative pressure wound therapy in the treatment of lower limb chronic ulcers (VLU and DFU). Poster presented at Wild on Wounds National Wound Conference. September 12–15, 2018. Poster 18.

For detailed product information, including indications for use, contraindications, precautions and warnings, please consult the product's applicable Instructions for Use (IFU) prior to use. For detailed product information, including indications for use, contraindications, precautions and warnings, please consult the product's applicable Instructions for Use (IFU) prior to use.

◇Trademark of Smith & Nephew, All Trademarks acknowledged, ©August 2019 Smith & Nephew. PICO-ADS-1909EN (CA99012)



Advance your career ...



WoundsCANADA
Institute

... from virtually anywhere!

The Wounds Canada Institute offers a wide range of educational programs to help you reach your full potential and fulfill your continuing education requirements. Regardless of your role in health care, you will find a program that suits your needs. View the full program list at **www.WoundsCanadaInstitute.ca**.

Click **here** to learn more and register online.

View the full program list at www.WoundsCanadaInstitute.ca.