

It's Time You Give It a Try!



ANTIBACTERIAL DRESSING
MEDIHONEY®
with Active *Leptospermum* Honey

GIVE US 2 WEEKS

Day by day we believe you'll
see wound improvement
worth talking about

Case 1



Day 1

Diabetic foot ulcer measuring 3 cm x 3 cm with 100% necrotic tissue. Silver sulfadiazine cream was applied as the first topical treatment on admission.



Day 16

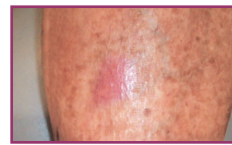
After 4 applications of MEDIHONEY®, the wound is 3 cm x 3 cm with 30% yellow stringy slough and granulation tissue.

Case 2



Day 1:

2.5 cm x 2.5 cm wound with 75% slough in patient with chronic venous insufficiency, hypertension and high cholesterol. MEDIHONEY® Gel was applied.



Day 14:

Complete wound closure.

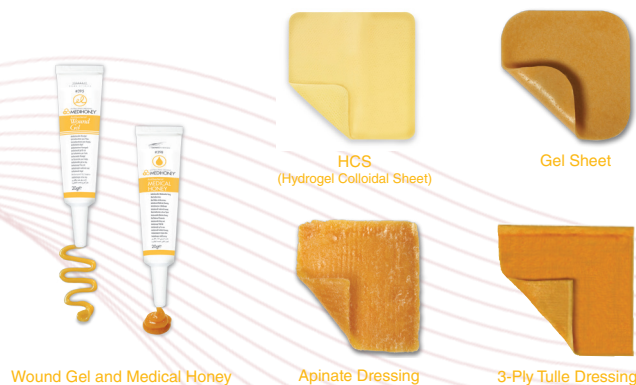
MEDIHONEY® promotes more than just autolytic debridement. Its high osmolarity and low pH works for you 24/7 to help progress the wound to healing.

Studies show that MEDIHONEY® with Active *Leptospermum* Honey:

- ✓ Aids the removal of necrotic tissue¹⁻²
- ✓ Helps to support healing of stalled wounds³⁻⁵
- ✓ Helps lower the pH of wounds, which has been shown to have wound healing benefits⁶⁻⁷

To trial MEDIHONEY®, contact your Derma Sciences representative today.

Questions? Call us at 1-800-387-5302 or email us at customerservice@dermasciences.com



DERMASCSCIENCES
A TISSUE REGENERATION COMPANY

1. Gethin G, Cowman S. Manuka honey vs. hydrogel - a prospective, open label, multicentre, randomised controlled trial to compare desloughing efficacy and healing outcomes venous ulcers. J of Clinical Nursing 2008;18(3):466-474. 2. Acton C, Dunwoody G. The use of medical grade honey in clinical practice. British J Nursing 2008;17(20): S38-S44. 3. Regulski M. A novel wound care dressing for chronic venous leg ulcerations. Podiatry Management 2008; Nov/Dec:235-246. 4. Simon A, Sofka K, Wiszniewsky G, Blaser G, Bode U, Fleischhack G. Wound care with MEDIHONEY® in pediatric hematology-oncology. Supportive Care in Cancer 2006;14(1): 91-7. 5. Gethin G, Cowman S. Case series of use of Manuka honey in leg ulceration. International Wound Journal 2005;2(1):10-15. 6. Gethin G, Cowman S. The impact of Manuka honey dressings on the surface pH of chronic wounds. International Wound Journal 2008;5:185-194. 7. Gethin G. Understanding the significance of surface pH in chronic wounds. Wounds UK 2007;3 (30): 52-54. Disclaimer: Results may vary. Photos represent one patient's outcome. For more examples of clinical case outcomes using MEDIHONEY®, visit our website. PHOTOS COURTESY OF: DR. RENE AMAYA, MD, CECILIA GRAY, RN, MSN, CNS, CWON, FATIMA ISHII, RN, BS, CWON, JENNIFER A GARDNER PT, DPT, MHA, CWS AND TARA MURPHY RN, BSN.