



Hydrofera® Sponsored Learning: Coast to Coast – Clinicians Choose Blue

Presenters: Rosemary Hill, RN BSN CWOCN WCCC(C); Natasha Lowe, BNRN IIWCC CCHN(C) NSWOC WCCC(C); Anik Belleville, ISPSC; Amanda Loney, BScN RN IIWCC NSWOC WCCC(C)

Rosemary Hill is a registered nurse and certified NSWOC working at Lions Gate Hospital in British Columbia. She participates regularly on provincial committees and is an expert speaker at national and international events. She is also a recipient of the Award of Excellence in Practice from the Association of Registered Nurses of British Columbia.

Natasha Lowe is a registered nurse with experience working in general and plastic surgery and burn units. She completed the IIWCC in 2010 and is a Regional Skin and Wound Care Consultant for Eastern Health in Newfoundland. She is also a certified NSWOC.

Anik Belleville is a registered nurse and has been practising as a certified NSWOC at CIUSSS Estrie, affiliated with Sherbrooke University in Quebec, since 2006. She was a pioneer in prescribing wound care treatments at CIUSS Estrie and has been instrumental in implementing this practice in her organization through various initiatives.

Amanda Loney is a registered nurse and a certified NSWOC and has also completed the IIWCC. She has worked as a community-based nurse and educator for 25 years, specializing in areas of wound, ostomy and continence for the last 20 years. She has been a keynote speaker at national conferences and published in the International Wound Journal.



READY, Transfer and Border PU dressings are ideal for shallow wounds. Transfer is great for between toes, under compression and total contact casting (TCC). The Border dressing provides secure hold and yet gentle removal. No silicone over the foam allows for intimate contact with the wound bed and uninterrupted exudate management.

Natural autolytic debridement and disruption of bio-film. The CLASSIC PVA dressing removes slough and devitalized tissue and biofilm at dressing change.

Natural Negative Pressure. CLASSIC PVA powerfully wicks bacteria-laden exudate away from the wound surface and into the dressing where bacteria and yeast are effectively killed.

The safe, non-cytotoxic choice. All Hydrofera Blue dressings can be used longer term, and throughout the continuum of care. Ideal for clinicians looking for an alternative to silver dressings. Hydrofera Blue is compatible for use with HBOT and with growth factors and enzymatic debriders.

Flatten rolled wound edges simply by cutting the CLASSIC dressing about ½" bigger than the wound, covering the edges.

Why Choose Blue?

Hydrofera Blue antibacterial dressings are very versatile and address all 4 factors of local wound care: Debridement, moisture management, infection and edge effect.

Hydrofera Blue has two types of foams: Polyvinyl alcohol (PVA) and Polyurethane (PU). The CLASSIC PVA dressings have a very high tensile strength and can be used for packing deep cavity wounds, sinuses and undermining, and ideal for use with negative pressure wound therapy (NPWT). The

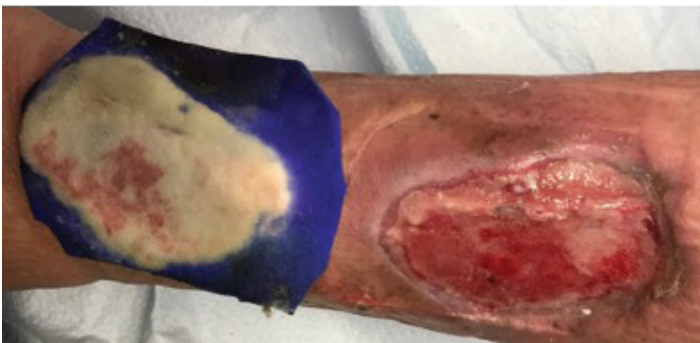


High tensile strength and wicking capacity. Hydrofera Blue CLASSIC PVA and tunneling dressings exert a natural negative pressure through capillary flow. This unique feature allows the dressing to absorb and wick away large amounts of exudate while maintaining a moist wound healing environment. Due to its high tensile strength, it can be used to pack deep cavities, sinuses and undermining without worries of fraying or leaving remnants behind. Easy one-piece removal.

The versatile READY-Transfer PU dressing. TCC remains one of the mainstays for the treatment of diabetic foot ulcers. **Hydrofera Blue READY-Transfer** has been used successfully in conjunction with TCC. No film backing allows for exudate to transfer through the dressing, away from the wound and into a secondary absorbent dressing, killing bacteria as it passes through. The dressing manages exudate and bioburden while the cast works to offload the high-pressured areas. Transfer is also ideal under compression, between toes and areas with yeast and venous leg ulcers.



All Hydrofera Blue dressings have a bioburden indicator. When the bacteria and yeast are absorbed into the dressing, they are effectively killed. When this occurs, the dressing may turn white. This indicates that it is time to change the dressing. We often say "If it turns white, it's lost its fight. If it stays blue change in 72 (hours)."



Debridement. The removal of slough, debris and bacterial components is essential for wound healing and prepares wounds for adjunctive treatments such as NPWT.

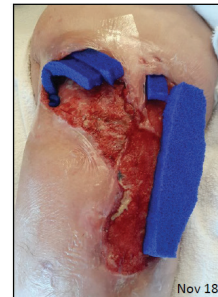
Hydrofera Blue CLASSIC PVA dressings facilitate autolytic wound debridement safely and effectively. Ideal for clinicians who do not sharp debride.



Hydrofera Blue and NPWT

Traditional NPWT and disposable negative pressure wound therapy (dNPWT) are common adjunctive therapies. NPWT typically requires a white PVA or black PU foam in contact with the wound. Many clinicians have found added benefits and great outcomes by substituting these foams with **Hydrofera Blue Heavy Drainage PVA** foam which:

- Can be used over bone and tendon, tunnels and undermining
- Provides antibacterial protection and added wicking
- Saves time: no need to cut HFB to exact wound size "picture frame" like you need to with black foam
- Saves \$\$ by allowing faster transition from canister to disposable NPWT



HydroferaBLUE

To request samples, please email
Daniel@hydrof.com

Presentation Digest is a production of Wounds Canada. (www.woundscanada.ca).

The views expressed in this report are those of the presenter and do not necessarily reflect those of Wounds Canada, which has neither reviewed nor endorsed this report.

© 2021 Canadian Association of Wound Care
All rights reserved.