

Hydrofera Sponsored Session:

Improving Patient Outcomes Across the Continuum of Care

Click to view



Presenters: Perry Mayer, MD; Amanda Loney, BScN RN IIWCC NSWOC WOCC(C)

Hydrofera Blue® addresses all four factors of local wound care.

Debridement

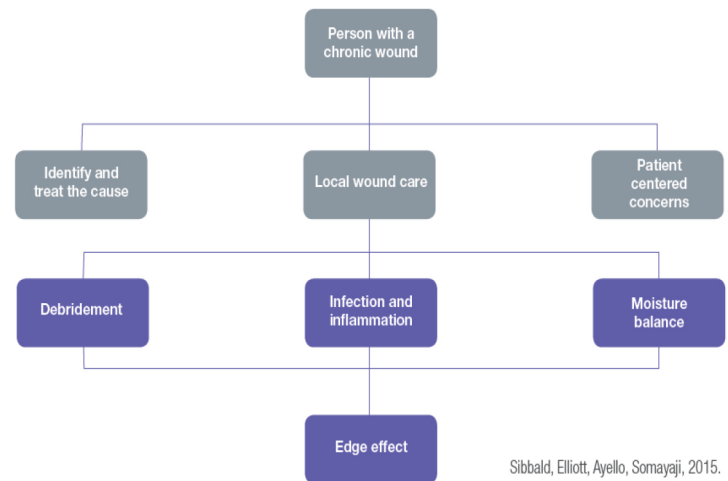
There are various methods of debridement (e.g., autolytic, simple gauze debridement, mechanical debridement, enzymatic debridement, sharp debridement) that can be used depending on the wound presentation and the health-care professional's scope of practice. Contraindications for debridement include ischemia, uncontrolled pain, risk of uncontrolled bleeding, inadequate skill level, lack of resources and local policies and procedures.

Hydrofera Blue CLASSIC dressings have natural negative pressure and provide safe, natural autolytic debridement. If debridement is not in your scope of practice, try Hydrofera Blue. Its compatible with enzymatic debrider or can be used on its own. This is an example of using Hydrofera Blue alone.



Infection and Inflammation

Hydrofera Blue dressings are Non-cytotoxic, do not inhibit growth factors and are safe to use throughout the continuum of care. Bacteria laden exudate is absorbed into the dressing where bacteria are killed,



Sibbald RG, Ovington LG, Ayello EA, Goodman L, Elliott JA. Wound bed preparation 2014 update: management of critical colonization with a gentian violet and methylene blue absorbent antibacterial dressing and elevated levels of matrix metalloproteinases with an ovine collagen extracellular matrix dressing. *Adv Skin Wound Care* 2014;27(3 Suppl 1):1-6

safely and effectively.

Ask us for this handy UPPER/LOWER card to help you manage wound infection. Email: daniel@hydrof.com

Wound Infection Checklist (UPPER)

Local / Superficial Infection - Treat with Topical Antimicrobials

Unhealthy tissue	Surface area on wound bed covered by devitalized tissue and unhealthy granulation tissue (thin and friable, bleeds easily, dark red, dull or dusky discoloration, overgranulation, pocketing, and bridging)
Poor healing	Stalled wound healing with no significant change in wound size or volume (approximately 10% in last 7 days)

Wound Infection Checklist (LOWER)

Deep Infection - Treat Systemically +/- Topical Antimicrobials

Larger in size	Sudden or unexplained increase in wound size or new areas of satellite breakdown
Osseous tissue and/or deep structure	Wound that probes to bone or deep structures; crepitus may be present
Warmth	Increased periwound temperature of more than 3° F compared to areas distant from the wound
Edema	Increased edema or induration around the wound
Redness	Redness of >2 cm beyond wound margin

Deep infection/increased bacterial burden should be suspected in the presence of 3 or more signs and symptoms.

© 2017 Wound
MMP # 0203178

References
1. Wainwright CM, Sibbald RG. A randomized controlled trial to evaluate an antimicrobial dressing with silver nanoparticles for the management of chronic wounds exhibiting signs of critical colonization. *Adv Skin Wound Care*. 2012 Nov;25(11):503-8.
2. Murphy, Christine Anne. "Evaluation and Treatment of Lower Extremity Wounds in a Vascular Surgery Patient Population" (2015). Electronic Thesis and Dissertation Repository. Paper 3351. <http://dx.doi.org/10.1155/2015/3351>

Hydrofera Blue through the continuum of care



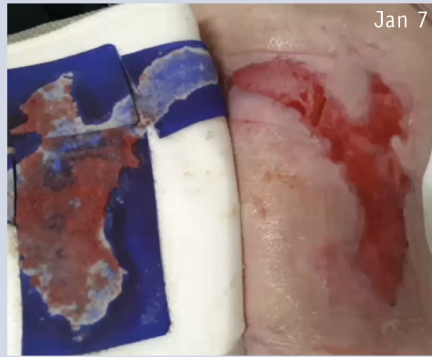
Debride with CLASSIC

Debride



Heavy Drainage with NPWT

Safe over bone & tendon



CLASSIC with Disposable NPWT



READY-Border to wound close

Tip

When using Hydrofera Blue in wounds with undermining or tunnelling, cut the CLASSIC dressing in a coil-like fashion. Coiling the dressing allows you to address the undermining with one piece.

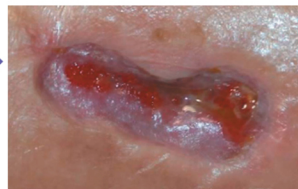


How to Flatten Rolled Edges

When treating a wound with rolled edges, cut the Hydrofera Blue CLASSIC dressing about 1–2 cm larger than the wound to overlap the rolled edges.



19 Days



Hydrofera Blue READY-Transfer

The NEW Hydrofera Blue READY®-Transfer does just that – it absorbs bacteria-laden exudate into the dressings where the bacteria are effectively killed, then transfers the exudate out and away from the wound. The Transfer dressing is ideal over VLU, under TCCs and compression between digits and toes and under trach and PEG tubes.



Hydrofera Blue with NPWT

Hydrofera has bench data on file showing the Hydrofera Heavy Draining PVA foam is experimentally equivalent to the white PVA and black PU foams with respect to pressure maintenance and flow properties. It absorbs 12 times its own weight in fluid, enabling quicker transition to disposable negative pressure wound therapy. It does not need to be cut exactly to the size of the wound, saving time and eliminating the need for tedious work on irregular wounds.

Hydrofera Blue CLASSIC Heavy Drainage is ideal with NPWT and the regular CLASSIC with disposable NPWT. Hydrofera Blue can be applied over bone and tendon, in tunnels and undermining while providing added wicking, antibacterial protection, and help flatten rolled wound edges. Provides comfort for patients by reducing pain and odour. Nurses report less complexity of care and no urgent visits due to loss of seal.

Contact us: daniel@hydrof.com

Hydrofera**BLUE**®

Presentation Digest is a production of Wounds Canada (www.woundscanada.ca).

The views expressed in this report are those of the presenters and do not necessarily reflect those of Wounds Canada, which has neither reviewed nor endorsed this report.

© 2022 Canadian Association of Wound Care.
All rights reserved.